



We are located in the mountains of NC, Southeast of Asheville and North of Lake Lure. We work in a studio at our home. Just 5 miles away we have a showroom and Open House events. It is a *Full House* of Pottery. If you are in the area give us a call. The showroom is located just two and one half miles South of I-40, Exit 73 at Old Fort.

Maggie and Freeman met in Arizona in 1976 and moved to Freeman's home in Etowah, NC in 1977. They both taught pottery classes at Blue Ridge Tech in Flat Rock. Together they have made Turtle Island Pottery a workable business and raised their two children. Jesse helped with the production during his school years and now Molly is creating her own ceramic art.

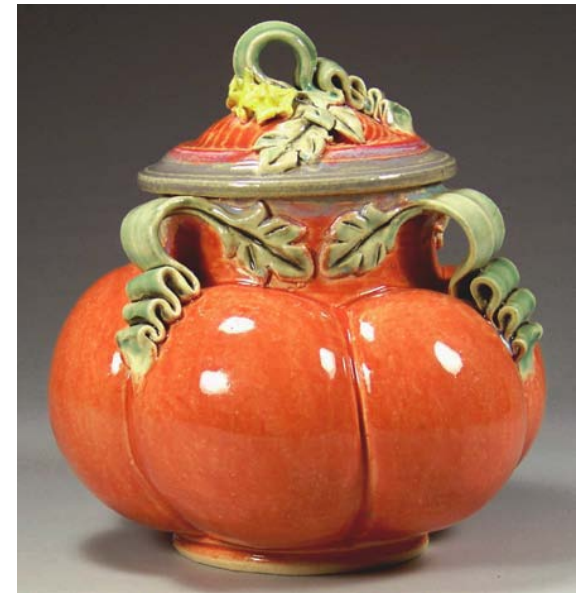
Since 1980 Turtle Island Pottery has produced a very popular line of functional stoneware. The pottery has become very recognizable with its opaque white glaze and hand brushed decorations of blue flowers with green and yellow accents and dragonflies. The pottery has found its way all over the world.



At the turn of the new century we began to create new and one of a kind forms to decorate the home.

Influenced by antique art pottery from the art nouveau style and the arts and crafts movement, most of our forms are started on the potter's wheel. We alter, manipulate and add details to the point where each piece is an individual sculpture. We can reproduce a theme, yet; there are still: "*No Two Alike*".

Layers of a variety of glazes have been applied, mostly by brush, to take advantage of the many ways minerals react with one another in the kiln and create the textures and colors that we desire. We paint with minerals and heat.



Visit our website to see more of what we do, for calendar updates, add your name to our e-mail list for news on special events or give us a call and come see a *Full House*...



**828.337.0992**

**[TiPottery@gmail.com](mailto:TiPottery@gmail.com)**