



**THE 37TH NATIONAL
ARTS AND CRAFTS CONFERENCE**

**The Grove Park Inn
February 16th - 18th, 2024**



THEODORE ELLISON RUG COLLECTION

Our exclusive carpet collection in collaboration with Stained Glass Artisan Theodore Ellison, incorporating his stained-glass interpretations into a stunning array of designs.



We specialize in craftsman rugs, carpet designs reminiscent of the Arts & Crafts Movement. We also offer a wide range of traditional, transitional and contemporary designs. Any one of our designs can be customized in color, size, or shape. We invite you to view our Collections online.



TIGER RUG

WWW.TIGERRUG.NET (401) 741-1123

*All styles
are available in
new colorways or
custom color one
your way.*



Bradbury & Bradbury RUG COLLECTION

Our exclusive carpet collection designed to enhance Bradbury & Bradbury's exceptional line of product offerings has expanded with new signature designs and colorways.



Traditional craft makes a bold impression

2024 Collector Edition Mission Rose Cabinet



STICKLEY®
SINCE 1900

stickley.com



Handcrafted in New Hampshire

Custom cabinetry
for every room in your home

CROWNPOINT
CABINETRY

800-999-4994 • www.crown-point.com

Available direct, nationwide

Work with one of our
in-house design professionals

OLDHOUSE JOURNAL

For 51 years, Old House Journal has helped owners restore, repair, renovate, and decorate their homes. OHJ is the go-to resource for trusted information on the big stuff: replacing a slate roof, flashing a chimney, patching plaster and stripping paint. But we cover finer details, too—including kitchens and baths, furniture, lighting, wallpaper and other finishes. Every issue offers a balanced mix of inspiring home tours and photography, along with hands-on restoration projects and how-to advice, planning and design, and integrated product coverage. In every issue, stories pertain to every house style—from Colonial-era to Victorian, Arts & Crafts Bungalow to Tudor, and even mid-century.

Subscribe!

CALL (800) 234-3797

GET ONE YEAR OF OLD HOUSE JOURNAL FOR

only \$10 VERY SPECIAL
SHOW PRICE

USE CODE ISHOW24

Now Arts & Crafts Homes comes to you three ways: at our website artsandcraftshomes.com ... as a free, biweekly e-newsletter ... and as a big, “book-azine”-size annual print edition with new editorial and more than 430 sources. Order it now: (833) 756-0624, or go to the website.



Table of Contents

Schedule of Events:

Friday Conference Agenda	p. 10.
Saturday Conference Agenda	p. 34.
Sunday Conference Agenda	p. 46.

Group Discussions p. 32

Seminars:

Friday Conference Director Kate Nixon
8:00pm *Opening Remarks*

Friday David Rago p. 26.
8:10pm *Hist-Ohr-y: The Last Chapter of George Ohr and A New Beginning*

Friday Ray Stubblebine p. 26
9:00pm *Stickley's Craftsman Homes and The People Who Built Them*

Saturday Richard Mohr p. 36.
9:00am *Partners in Beauty: The Boys, The Art, The Joy of Cathedral Oaks*

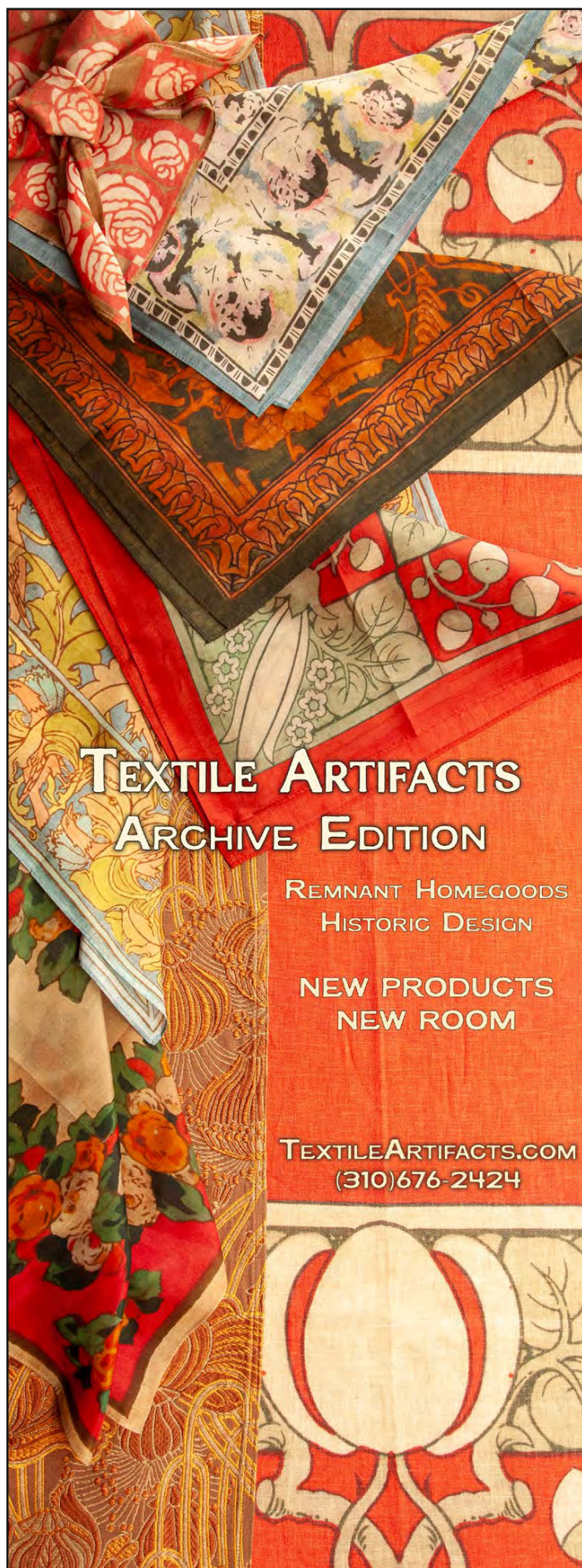
Saturday Andrea Morgan p. 36.
10:00am *Masterpieces of Simple Design: The Arts & Crafts Furniture of the Two Red Roses Collection*

Saturday Patti Bourgeois p. 38.
8:00pm *Hokusai's Oeuvre*

Sunday Garth Johnson p. 48.
9:00am *The Butterfly Effect: Adelaide Alsop Robineau's Empowering Effects on the World of Ceramics and Beyond*

Sunday Bruce Johnson p. 48.
10:00am *Homespun Heroines: Eleanor Vance, Charlotte Yale, and the Biltmore Industries Legacy*

(continued on next page)



robertkaplan

COLLECTION




A MASTERWORK BY MARBLEHEAD POTTERY

Designed by Annie E. Aldrich and decorated by Sarah Tutt

Marblehead, Massachusetts, circa 1909, 8¾" h x 7¼" d

Descended through the family of Sarah Tutt

917.576.2819 | RobertKaplanCollection.com | On Instagram 



FREE SHIPPING
on any order with code **GPI2024**
at laurawilder.com, through 2/28

Table of Contents (continued)

Special Events:

<i>Silent Auction</i>	p. 12.
<i>Book Club Discussions</i>	p. 22.
<i>Demonstrations by Artisans</i>	p. 24.
<i>Asheville Art Museum Presentation</i>	p. 58.
<i>Pre-Conference Workshops</i>	p. 73.

Educational Exhibits:

<i>Peters & Reed Pottery</i> by The American Art Pottery Association	p. 42.
<i>A Message To Garcia:</i> <i>A History of Then & Now</i> by the Roycroft Campus Corporation	p. 42.
<i>From Hillside to Smithfield: Folk Art to Fine Art</i> by Tommy McPherson	p. 42.

Special Articles:

<i>A Year of Arts & Crafts Enlightenment</i>	p. 08.
<i>Tom Killion's Journey to Hokusai</i>	p. 39.
<i>The Year 2023 in Arts & Crafts</i>	p. 40.
<i>A Study In Sargeant</i>	p. 50.
<i>35 Years of the Stickley Museum at</i> <i>Craftsman Farms</i>	p. 52.
<i>Asheville Art Museum Presentation:</i> <i>A New Approach to the Art of Arts & Crafts</i>	p. 58.
<i>Start The Presses:</i> <i>Restoring the Roycroft Print Shop</i>	p. 60.
<i>Lesser Known Furniture Shopmarks</i>	p. 62.
<i>The Life of Dow: A Brief Outline of</i> <i>Arthur Wesley Dow</i>	p. 65.
<i>Social Media Groups for Collectors</i>	p. 66.
<i>Metal and Enamel Magic: The Works of</i> <i>the Elusive Gertrude Twichell</i>	p. 68.
<i>To Those We've Lost</i>	p. 70.

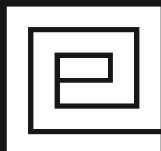
Tours and Information:

Conference Information	p. 10.
Biltmore Industries Walking Tours	p. 16.
Grove Park Inn Walking Tours	p. 18.
Preservation Society House Tours	p. 30.
Dining at the Grove Park Inn	p. 72.
Conference Exhibitors and Maps	p. 76.
Asheville Map	p. 86.
Omni Grove Park Inn Map	Back cover.

The Everson Museum of Art is pleased to announce that *Spotted Green 2-Fold Vase with Twisted Handles* (2023) by Bill Clark of Clark House Pottery has been added to our permanent collection.



Created by Bill Clark
of Clark House Pottery
*Spotted Green 2-Fold Vase
with Twisted Handles* (2023)
Stoneware, 8 x 9½ x 4½ inches
Gift of Dr. Tom Folk



**Everson
Museum
of Art**

SYRACUSE, NY

EVERSON.ORG

2023: A Year of Arts & Crafts Enlightenment

by Kate Nixon

Director, The National Arts & Crafts Conference

Last month, I asked a question that resonated with many of our collector audience in a very unexpected way. I asked "What does the Arts & Crafts movement give us in times of grief?" I was attempting to write about the philosophy of the movement and exploring how relevant it has become to my life with a recent family loss. What I received was an outpouring of connection with collectors and conference supporters, telling stories of how they moved forward in life embracing work, community, and their collections!

Not only was I reminded of how the natural beauty of the world gives us perspective, but also I was reminded of the importance of connection within our community. This sparked a reflection of my year immersed in the Arts & Crafts world. The little Craftsman light clicked.

In the year 2023, I have explored museums in New York and North Carolina. Thanks to a dear friend with a lovely apartment in Brooklyn and being able to attend this year's American Art Pottery Association conference in Syracuse, I marvelled at the iconic *Scarab Vase* and dipped into the creative history of our own North Carolina potters. I almost forgot to breathe as I walked into the Frank Lloyd Wright interior (shown above) at the Metropolitan Museum of Art. I've explored the Syracuse Arts & Crafts home of Gustav Stickley, a dictionary definition of historic preservation as hard-working supporters have brought back each room with purpose and legacy. While the beautiful interiors and gorgeous works from legends like Stickley, Wright, and Robineau are a massive part of the Arts and Crafts appeal, there is an essential layer of understanding that needs spotlighting every now and then. As I've walked through these museums, I've

had to remind myself that I wasn't just looking at the style of the piece, but the tremendous amount of toil, research, and persistence in creating that work.

This reminded me of the large wooden sign that adorned Bruce's Arts & Crafts office from my first months working with him. The sign read: "Life Without Industry Is Guilt. Industry Without Art Is Brutality." It is complicated: this combining of art and business, beauty and monetary value. While collectors know the pieces that make up their collections are



worthy investments, these pieces also are reminders of a natural world bigger than themselves. And they also recognize that the efforts and the toil taken in the creation of a handcrafted chair will always be embraced by those looking for the well built. And so our community will expand with a new generation.

We will never stop needing our community, learning from and telling stories to each other. I hope you will remember this binding of community during your discussion groups and seminars. Lastly, I want to express my great appreciation to this community for their support during this time of personal loss. I look to the art that I am surrounded by as a refuge and a teacher showing me that life is filled with regeneration and hope. Remember that as you walk the halls of the Grove Park Inn, a reminder of the beautiful in a house of Arts & Crafts.

- KN

Dalton's

AMERICAN DECORATIVE ARTS



1931 James St. Syracuse, NY 13206
www.daltons.com (315) 463-1568

Friday Schedule

9:00-10:00am	10:00-11:00am	11:00-Noon	Noon-1:00pm	1:00-2:00pm	2:00-3:00pm	
Grove Park Inn Walking Tour (p.18)	Grove Park Inn Walking Tour (p.18) Biltmore Industries Walking Tour (p.16)	Small Group Discussions (p. 32)	Grove Park Inn Walking Tour (p.18) <i>Lunch Options on page 72.</i>	Grove Park Inn Walking Tour (p.18)	Grove Park Inn Walking Tour (p.18)	
<p>Pro tip: Please use your time wisely Friday morning. The Friday afternoon line is infamous for being long with people waiting early in the morning in line.</p> 				<p>Conference Shows:</p> <p>Arts & Crafts Antiques Show 8th floor, Vanderbilt Wing (p. 74)</p> <p>Contemporary Craftsirms Show 8th floor, Vanderbilt Wing (p. 76)</p> <p>Books, Magazines & More Show 8th & 10th floors, Vanderbilt Wing (p. 79)</p> <p>Silent Auction: 8th floor atrium, Vanderbilt Wing (p. 12)</p> <p>Demonstrations: Taft Room, Vanderbilt Wing (p. 24)</p>		

Important Information For You

Please read and follow these important guidelines. Not only will they help you in the long run, they will help your fellow attendees enjoy their time as well.

Your name badge is your entry pass to all conference events including seminars, discussion groups, Grove Park Inn tours, and even acts as your Arts & Crafts shows admission proof! Wear it proudly -- or be turned away!

The line for all shows each day will form near the glass elevator on the 10th floor. No one entering the 8th floor from any other direction will be allowed in until everyone in line has entered.

All events start on time. If you are late, please enter quietly -- and don't let the door slam.

Cell phones should be on 'Silent' all weekend. Cell phone conversations should be held in private areas.

No flash photography is permitted during the seminars. Ask for the exhibitor's permission before photographing any booth.

No personal antiques should be brought into the shows on the 8th floor of the Vanderbilt wing. Any item leaving any show area must have a receipt and you will be asked to show it as you leave with your item.

For safety reasons, strollers are not allowed in the show. You may leave them inside the Ticket Booth.

For transportation from the Grove Park Inn, please allow two hours between hotel departure and your flight. If you are staying someplace other than the GPI and have made an advance transportation plan, please bring your bags to the GPI bell stand on Sunday.

Cabs should be ordered in advance at the bell stand.

Checkout has been extended to 12:30pm on Sunday, but we suggest checking out prior to the morning seminars. The bellstand will store your bags for you.

Friday Schedule

	3:00-4:00pm	5:00-6:00pm	6:00-7:00pm	7:00-8:00pm	8:00-8:15pm	9:00-9:50pm
	Grove Park Inn Walking Tour (p.18)	<div>Book Club Roosevelt Room K. 4:30-5:30 Vanderbilts (p. 22)</div>	<i>Dinner Options Listed on page 72.</i>		Heritage Ballroom Sammons Wing <i>Opening Remarks</i> by Conference Director Kate Nixon	Seminar: <i>Stickley's Craftsman Homes and the People Who Built Them</i> by Ray Stubblebine Heritage Ballroom Sammons Wing (p. 26)
Conference Shows: Arts & Crafts Antiques Show 8th floor, Vanderbilt Wing (p. 74) Contemporary Craftsirms Show 8th floor, Vanderbilt Wing (p. 76) Books, Magazines & More Show 8th & 10th floors, Vanderbilt Wing (p. 79) Silent Auction: 8th floor atrium, Vanderbilt Wing (p. 12) Demonstrations: Taft Room, Vanderbilt Wing (p. 24)					8:15-9:00pm	
			Seminar: <i>Hist-Ohr-y: The Last Chapter of George Ohr and a New Beginning</i> by David Rago Heritage Ballroom Sammons Wing (p. 26)			
			Dessert Social Hour: Presidents Lounge Sammons Wing 6:30pm - 8:00pm Before you experience the seminars, enjoy a selection of desserts with your friends in the Presidents Lounge!			



*Where traditional form
and craftsmanship
provides for a future
generations' enjoyment...*


BRIAN BRACE
FINE FURNITURE



Roycroft Renaissance
Certified Artisan

Time honored furniture processes
for the highest quality standards.
Thoughtfully selected finest lumber.
Hand-rubbed oil finishes. Traditional
mortise-and-tenon joinery construction.



828.777.8184 || www.BrianBraceFineFurniture.com

Proudly serving the Asheville and Western North Carolina community. **Shipped nationwide.**

Auction to Aid A&C Research

You can play an important role in furthering your own education and ensuring the future of the Arts & Crafts revival by placing your bids on the items on display in the 8th floor Vanderbilt Wing Atrium. Proceeds from the auction will benefit the non-profit Arts & Crafts Research Fund, which makes annual grants to assist individuals researching Arts & Crafts topics.

The Arts & Crafts Research Fund was established several years ago by Bruce Johnson with the goal of providing financial assistance to researchers and writers involved in the Arts & Crafts movement. This year, Bruce Johnson returns to the Grove Park Inn to help organize the silent auction.

All Silent Auction proceeds raised at the National Arts & Crafts Conference will go to the research-fund, which is distributed at no specific time during the following year. Research grants typically range between \$2,000 - \$4,000. Contact information and the complete application process is available at Arts-CraftsConference.com.



Location: 8th Floor Atrium, Vanderbilt Wing

Drop-Off: Thursday 8:00am - 6:00pm
Friday 8:00am - 11:00am

Bidding: Friday 1:00pm - 6:00pm
Saturday Noon - 6:00pm

Pick-Up: Sunday 11:00am - 2:00pm

“Thistle”

New! Re-introducing the original artwork, shown here in *Brook* from our collection of pre-trimmed, easy-to-install, eco-friendly wallpapers. Samples available at www.bradbury.com.

Bradbury & Bradbury

The Arts & Crafts Research Fund

The Arts & Crafts Research Fund was established several years ago by Bruce Johnson with the goal of providing financial assistance to researchers and writers involved in the Arts & Crafts movement.

Research grants typically range between \$2,000-\$4,000.

Since 2010, the non-profit Arts and Crafts Research Fund has been providing grants to individuals who are exploring topics of interest to Arts and Crafts collectors. The primary source of funds for the ACRF is the annual silent auction held in conjunction with the National Arts and Crafts Conference at the historic Grove Park Inn. For the silent auction, the Research Fund relies on donated items from Arts and Crafts collectors, regardless whether or not they plan on attending the conference.

The ACRF provided travel expenses for author Robert Rust to continue his research into Victor Toothaker, the Roycroft coppersmith who in 1913 designed the lighting fixtures for the Grove Park Inn. Toothaker is also credited with designing the eight-foot tall clock which has greeted guests entering the inn

since 1913. The ACRF also enabled researcher Ron Ciarmello to further explore the metalwork produced by Stickley Brothers, which in 1904 sold a wide variety of hammered copper wares from lamps and candlesticks to bowls, urns, and boxes. As Ron has determined, production at their plant ceased by 1907, but as late as 1912, however, the firm continued to sell these same items, presumably purchased from independent coppersmiths who formerly worked in the Stickley Brothers workshops.

The number of Arts and Crafts authors and seminar presenters who have received research grants is too long to list here, but include Rosalie Berberian, Kitty Turgeon, Susan Futterman, the Rose Valley Museum, the Stickley Museum at Craftsman Farms, Michael McCracken, the Roycroft Campus, Heather Stivison, Nan Chase, Jon Kornacki, and documentary film producer Herb Stratford.

The silent auction which provides the Arts and Crafts Research Fund with the money to distribute to qualified researchers depends entirely on individuals

(Continues on p. 51)

Paul J. Katrich



www.katrich.org

**FORWARD THINKING
IN THE CRAFTSMAN TRADITION**



www.MissionGuild.com

Dirk van Erp Workshop Museum



The recreation
of Dirk van Erp's
workshop with
his original tools.

Open Saturdays 10am - 5pm

New Location:

1901 Broadway
Alameda, California 94501

510 647 3621

www.dirkvanerpfoundation.org

CALIFORNIA HISTORICAL DESIGN



View of our New Gallery in Alameda, CA

The Largest
Selection of
Vintage Arts
& Crafts

Open Saturdays 10am - 5pm

New Location:

1901 Broadway
Alameda, California 94501

Gus Bostrom - Proprietor

510 647 3621

www.acstickley.com

Biltmore Industries: An Arts and Crafts Legacy

Free Daily Walking Tours: The Biltmore Industries Museum

Friday 10:00am - 11:00am

Saturday 3:00pm - 4:00pm

Sunday 1:00pm - 2:00pm

Located adjacent to the Grove Park Inn, the historic weaving and woodworking complex of Biltmore Industries still stands as a collector's point of interest with its Arts and Crafts legacy helping to cement Asheville's reputation as an Arts and Crafts capital. Founded in 1905 by Edith Vanderbilt and local inspirational teachers Eleanor Vance and Charlotte Yale, Biltmore Industries empowered local students with the ability to craft and find a career in the textile arts.

An accomplished woodcarver, Eleanor Vance began teaching children who lived in Biltmore Village near Vanderbilt's sprawling estate south of Asheville how to carve walnut bowls and picture frames in the Arts and Crafts style and philosophy.

While many crafts were taught in those early years, the hand weaving of fine cloth, woodworking, and woodcarving proved the most popular. Edith Vanderbilt took a special interest in the possibilities presented by the weaving of homespun fabric for men's suits and women's dresses, even arranging for Yale and Vance to travel to Scotland to learn even more about looms and the art of weaving quality homespun cloth from wool. Under the leadership of Yale and Vance, and with the benevolent guidance of Edith Vanderbilt, Biltmore Estate Industries soon established a reputation for quality craftsmanship of both woodworking and homespun cloth across the country.

After the departure of Vance and Yale, plus the unexpected death of her husband, Edith Vanderbilt decided in 1917 to sell the Arts and Crafts enterprise. Only after assuring Edith Vanderbilt that he would "continue its educational features and develop the arts as it was commercial" did she consent to sell Biltmore Estate Industries to Frederick L. Seely, president of the Grove Park Inn. He shortened the name and moved the woodworkers and weavers onto the resort in a series of Arts and Crafts buildings.

Conference attendees can learn the story of Biltmore Industries in a guided tour that includes a visit to the historic Dye House, where you'll be able to view the original looms, carding machine spinning mule, and dye vats used to make the famous Biltmore handwoven homespun cloth. Biltmore Industries had a total of 40 looms, where workers shipped bolts of fine crafted wool fabric as far away as China and Uruguay and also to tourists such as Thomas Edison, Henry Ford, and Helen Keller.

In addition to the Biltmore Industries Museum, Grovewood Village hosts nine resident artists who

(Continued on p. 78)

For an in-depth look at Biltmore Industries and the lives of Eleanor Vance and Charlotte York, don't miss Bruce Johnson's seminar on Sunday, Feb. 18th at 10!



HISTORIC GROVEWOOD VILLAGE



ART GALLERY | SCULPTURE GARDEN | MUSEUMS | RESTAURANT

ADJACENT TO THE OMNI GROVE PARK INN

Located in the former weaving and woodworking complex of Biltmore Industries.
Conference Hours: 10am - 5pm

(828) 253-7651 | info@groewood.com | groewood.com

Grove Park Inn Walking Tours

Having been built on the side of a mountain with the main level being on the tenth floor, it is no wonder guests sometimes get confused.

Add to that more than 108 years of history and a guest list that includes Presidents Coolidge, Hoover, Roosevelt, Eisenhower, Bush, Clinton and Obama, as well as Thomas Edison, Henry Ford, Eleanor Roosevelt, and scores more and you can understand why we offer historic walking tours at the beginning of this weekend's conference.

Many guests who come to the Grove Park Inn often leave without discovering the hidden history of this fascinating hotel. A knowledgeable Omni Grove Park Inn tour guide who loves to share with us his knowledge of the hotel will be leading historical walking tours

Friday: Presidents Lounge

9:00am - 9:45am

10:00am - 10:45am

Noon - 12:45pm

1:00pm - 1:45pm

2:00pm - 2:45pm

3:00pm - 3:45pm

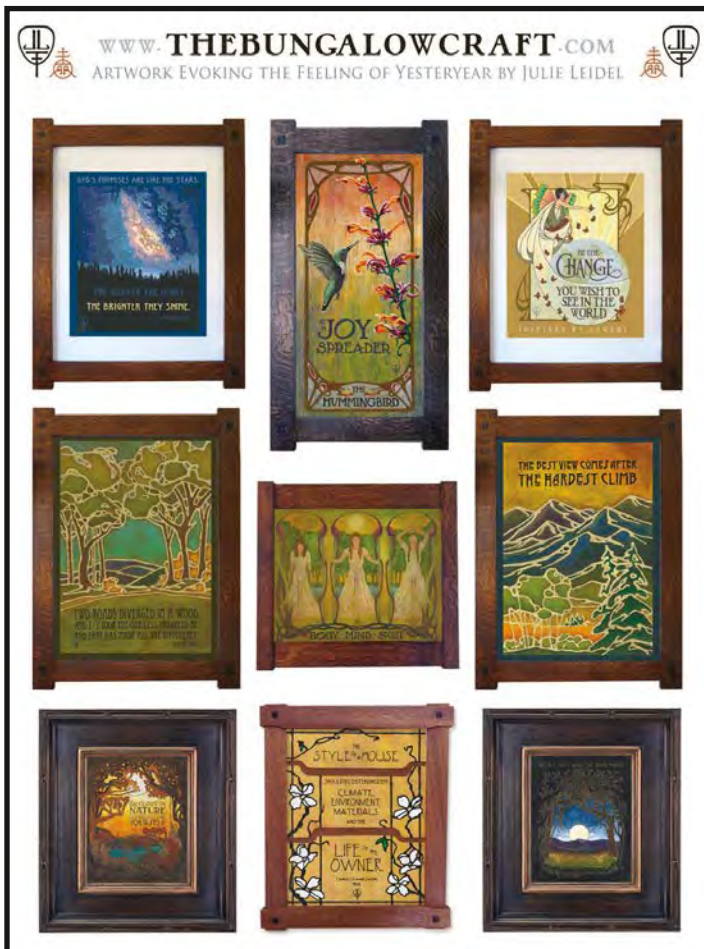
for the Arts and Crafts Conference, adding to your appreciation for its Arts and Crafts heritage.

After meeting at the Presidents Lounge in the Sammons Wing, your tour guide will take you on an informative journey through the Grove Park Inn and back in time. You will learn what happened to the original rock pillars, the Roycroft chandeliers, and the Heywood-Wakefeld wicker rockers

in the Great Hall.

Your guide will also take you to the Palm Court, the hotel's second lobby that most people never see. Along the way you'll discover why the elevators are hidden inside the fireplaces, learn what happened to the original Arts & Crafts stencils, and see where F. Scott Fitzgerald lived – and nearly died.

Autographed copies of Bruce Johnson's *Tales of the Grove Park Inn* are available in the 8th floor Books Show, along with his novel, *An Unexpected Guest*, which will take you on your own private tour of the Grove Park Inn. The action all takes place on the night of August 27, 1918 – and will leave you wondering even more about the Inn's most famous ghostly guest, The Pink Lady.



**PRESERVE
EDUCATE
SUPPORT
INSPIRE
SHOP** SHOP.GAMBLEHOUSE.ORG

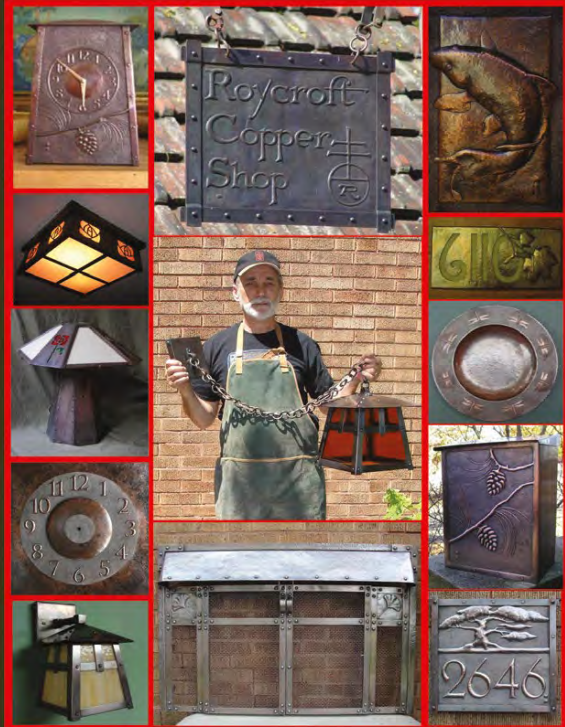
PURCHASES SUPPORT THE RESTORATION AND CONSERVATION OF THE GAMBLE HOUSE

Use the discount code "LUVACC" to receive **FREE SHIPPING** on purchases made at SHOP.GAMBLEHOUSE.ORG between February 16-28, 2023.

THE GAMBLE HOUSE: 4 Westmoreland Place, Pasadena, CA 91103 | gamblehouse.org
Bookstore: 626-449-4178 | bookstore@gamblehouse.org



Frank M. Glapa



MASTER ROYCROFT ARTISAN IN METAL
FMG DESIGN 2601 W. FARWELL AVE. CHICAGO IL 60645
www.fmgdesigns.com - 773.781.2957 - fmglapa@earthlink.net

Woodblock Prints

by Yoshiko Yamamoto



The Arts & Crafts Press

www.artsandcraftspress.com

Arts & Crafts Period Textiles

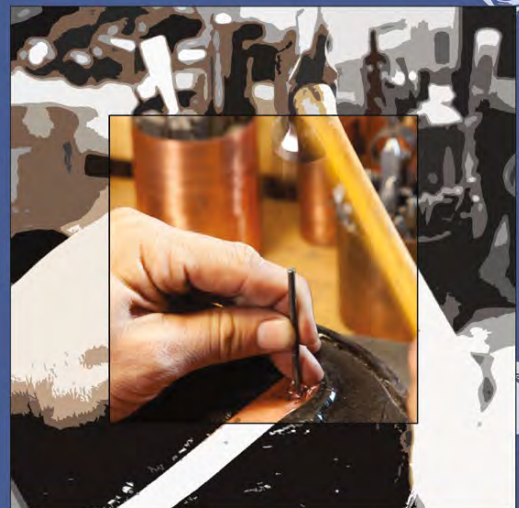
Timothy Hansen & Dianne Ayres

Exhibiting antique textiles,
antiquarian books, Pictorialist
photography and more.

Workshop in Oakland, Cal.
creating custom textiles,
embroidery kits, and
brass curtain hardware.

510-654-1645
www.TextileStudio.com

Van Orstrand Metal Studio



Hand Crafted Art Metal
& Jewelry

VMSTV.COM
vmstudio@verizon.net

Books Make Their Debut at the National Arts & Crafts Shows

Friday - Sunday

(see schedule posted at the Turn of the Century booth on 8th floor Vanderbilt)

Books have always been an important part of any Arts and Crafts collection. Whether it's for research or enjoyment, they are essential tools for anyone in the collecting world to have. During this conference weekend at the Grove Park Inn, you can look forward to not only purchasing a wide variety of books from our booksellers on the 8th floor, but getting your books signed by the authors!

The Books and More show is the event where occasionally

authors in the Arts & Crafts collector community will debut their books to their fellow collectors and the general public. This year, two brand new titles will be offered with the first printing available to buy and to be signed by the author! An Asheville native and auctioneer Robert Brunk of Brunk Auctions will debut his new book *A Question of Value: Stories from the Life of an Auctioneer* with his personal tales of art and objects and everything in between. Speaker Ray Stubblebine will show us the follow up to his book on Craftsman Homes with new Craftsman homes, the plans behind them, and his gorgeous photography in *MORE Stickley's Craftsman Homes*.

Collectors from California

and enthusiasts of the California Decorative style will get the chance to say hello to and get the signature of Dr. Richard Mohr, who will present on the Art of Cathedral Oaks and the story of the two men who led the Californian Arts & Crafts school.

The Gamble House Bookstore, the conference bookseller, will have many titles for sale outside the 8th floor Vanderbilt grand ballroom and will host the author signings table. Next to the Silent Auction, Knock on Wood Publications and Bruce Johnson will be selling copies of Johnson's latest book *Biltmore Industries & Tryon Toymakers: The Lives and Works of Charlotte Yale and Eleanor Vance* in addition to his other

(Continued on p.51)



Visit us in our shop!

85 Gates Street

White River Junction, Vermont 05001

New hours:

Friday & Saturday 11-4 or by appt.

(802) 457-1764 stinc@sover.net

www.woodblock-prints.com

STEVEN THOMAS, INC.

Fine Art & Antiques

As you have no doubt heard or gathered by now, after 34 wonderful years, 2023 was our final show at Grove Park. Since we arrived wide-eyed late at night in 1991 for our first show, to my first knee-knocking small group discussion 1992, it's been a delightful experience. We wish to thank you all for your friendship, support and love. There has never been a show like this. We are so blessed to have been a part of it.

However...we are not retiring. We are still selectively buying Arts & Crafts artwork. We will market these new purchases as we have been doing with our Fine Prints inventory for the past few years—through periodic email "Blasts." When we gather a critical mass, we will send out an email announcing the upcoming blast giving date and a time that gives East and West coast clients equal shots. So...if you are not already on our email list, be sure to sign up on our website!

We are proud to offer the following titles,
making their debut at the National Arts
and Crafts Books and More Show!

A Question of Value:
Stories from the Life
of an Auctioneer

by Robert Brunk
of Asheville's own
Brunk Auctions

A QUESTION OF VALUE



Stories from the
Life of an Auctioneer

Robert Brunk

MORE
Stickley's Craftsman Homes
—BLUEPRINTS, CATALOGS, PHOTOGRAPHS—



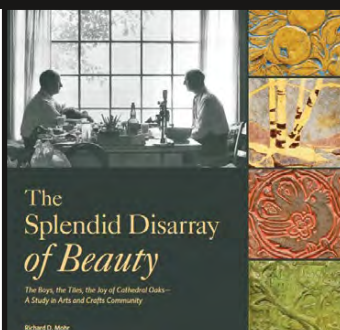
MORE Stickley's
Craftsman Homes:
Blueprints, Catalogs,
Photographs

by Ray Stubblebine

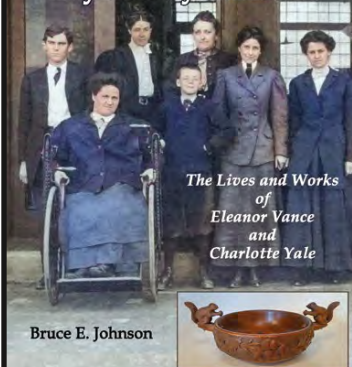
See their 2024 seminar and buy their book!

The Splendid Disarray
of Beauty: The Boys,
The Tiles, The Joy of
Cathedral Oaks -
A Study in Arts and
Crafts Community

by Richard Mohr



Biltmore Industries
Tryon Toy-Makers



Biltmore Industries
and Tryon Toymakers:
The Lives and Works
of Eleanor Vance and
Charlotte Yale

by Bruce Johnson

Integrity at work.



©Alexander Vertikoff

CELEBRATING OVER 36 YEARS OF AWARD-WINNING ARCHITECTURE

KELLY SUTHERLIN McLEOD ARCHITECTURE, INC.
PROVIDES COMPLETE ARCHITECTURAL SERVICES FOR
PRESERVATION OF HISTORIC LANDMARK PROPERTIES,
REHABILITATION AND NEW CONSTRUCTION
FOR INSTITUTIONAL, CUSTOM RESIDENTIAL
AND CULTURAL PROJECTS.



KELLY SUTHERLIN McLEOD
ARCHITECTURE, INC.

562.427.6697
ksmarchitecture.com

2024 Book Club Selections

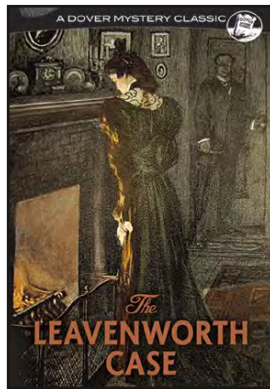
Led by 37-year attendee Pat Bartinique, our Book Club discussions continue to increase in popularity. Feel free to drop in even if you did not have a chance to finish either of our books. Each book discussion will take place in the Vanderbilt Wing Roosevelt Room K (see page 88).

Friday 4:30 - 5:30pm

The Leavenworth Case

by Anna Katharine Green

For fans of Charles Rohlfs' furniture, the name Anna Katharine Green should sound familiar. Green, Rohlfs' wife, published *The Leavenworth Case* in 1878, telling the now classic and gripping story of a death in New York City society with twists, turns, a possible lady killer, and the introduction of the first American series detective — Ebenezer Gryce. *The Leavenworth Case* was an instant bestseller and is considered Green's best book — the first full length detective story ever written by a woman. This story of love, greed, sacrifice, and betrayal has nearly been forgotten, but we are bringing it back into the spotlight as our first mystery book selection.

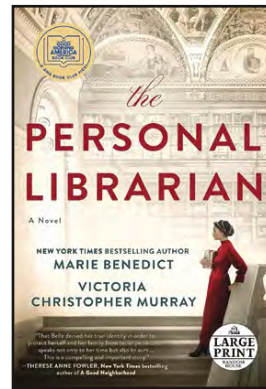


Saturday 2:00pm - 3:00pm

The Personal Librarian

by Marie Benedict
and Victoria Christopher Murray


In her twenties, Belle da Costa Greene is hired by J. P. Morgan to curate a collection of rare manuscripts, books, and artwork for his newly built Pierpont Morgan Library. Belle becomes a fixture in New York City society and one of the most



powerful people in the art and book world, known for her impeccable taste and shrewd negotiating for critical works as she helps create a world-class collection. But Belle has a secret, one she must protect at all costs.

The Personal Librarian tells the story of an extraordinary woman, famous for her intellect, style, and wit, and shares the length she must go to—for the protection of her family and her legacy—to preserve her carefully crafted white identity in the racist world in which she lives.

2R FineArts Appraisals
Robert Rust, USPAP



Full service USPAP Personal
Property Appraisal Service

(720) 732-6922
2Rfinearts@gmail.com

United Crafts
Specialists in the Arts & Crafts Movement.
We are actively buying collections and individual pieces.



Furniture, Metalwork, Lighting, Pottery, Art.

UNITED-CRAFTS.COM
Sell, Consign, Auction.

ONE-OF-A-KIND LIGHTING for your ONE-OF-A-KIND HOME

Your home is unlike any other.
Why isn't your lighting?

Turn your custom ideas into reality with
our team at Old California.

OLD
CALIFORNIA
FINE
LIGHTING
&
HOME GOODS

Kick off the design process with us:

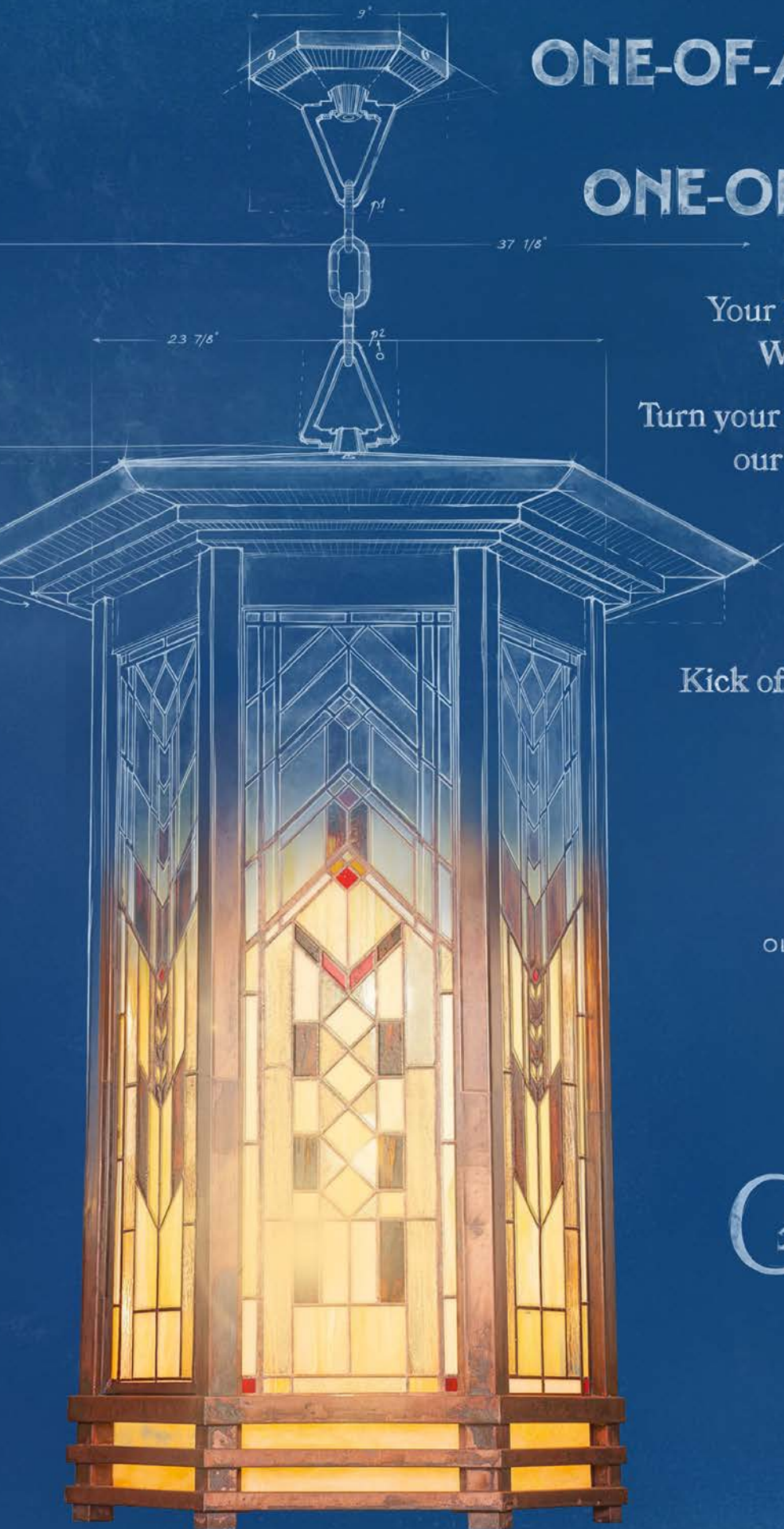


OLDCALIFORNIA.COM/CUSTOM.HTML

OLD
CALIFORNIA
FINE LIGHTING &
HOME GOODS

Manufacturing bespoke
lighting since 1989.

800-577-6679



Daily Arts & Crafts Demonstrations

Please note: All demonstrations listed are 20 minutes long.

"Transforming visual ideas into art": Nawal Motawi's Design Thought Process

by Nawal Motawi

Taft Room 8th Floor, Vanderbilt Wing



Have you ever wondered how the intricate designs of a Motawi Tile are produced from idea to final product? You could watch the PBS special *Craft in America* OR you can watch Nawal present her brief presentation this conference weekend. Nawal Motawi will show and discuss her creative process as she creates an art tile design, including how she uses Elements and Principles of Design as taught by her first art teacher. She will also explain the aesthetic choices that she makes when creating her installation projects.

Nawal Motawi, owner and artistic director of The Tileworks, graduated from the University of Michigan and made tile in her garage before founding the company in 1992. Motawi Tileworks now employs more than 40 artisans and was recently named a "Small Giant" by *Forbes Magazine*.

Friday 2:00pm & 3:30pm
Saturday 2:00pm & 3:30pm
Sunday 1:00pm & 2:30pm

Motawi Tileworks ~170 Enterprise Drive
734-213-0017 Ann Arbor, MI 48103

The Process of Ebonizing: An Arts & Crafts Closeup

by David Van Epps

Taft Room 8th Floor, Vanderbilt Wing



Several of the Arts & Crafts masters incorporated inlaid decoration in their furniture production, presumably to bolster sales. In 1915, Charles Limbert introduced his "Ebon-Oak" line; pieces of his normal line trimmed with simple but elegant rectilinear inlays.

The name notwithstanding, the "ebony" inlays are not ebony, but ebonized black walnut. In these sessions, the process of ebonizing other woods to look like ebony will be demonstrated.

David has been a collector and builder of Arts & Crafts style furniture for more than 50 years, researching the history, construction techniques and design elements of the period with special emphasis on his particular passion, the "Holland Dutch Arts & Crafts" furniture of Charles Limbert. There will be time for your questions and informal discussion at each session.

Friday 2:30pm & 4:00pm
Saturday 1:30pm & 4:00pm
Sunday 12:30pm & 2:00pm

David A. Van Epps
Northwoods Restorations

5930 County Route 24 Canton, NY 13617
(315) 854-4603 davanepps@gmail.com



The
PERSIAN
C A R P E T

The Arts & Crafts Carpet Collection

The most authentic and beautiful carpets in the Arts & Crafts tradition come from our looms to your floor.



The Field Lilies (PC-56A)

Friday Seminar:
Heritage Ballroom
8:10pm

***Hist-Ohr-y:
The Last Chapter
of George Ohr and
A New Beginning***
by David Rago

Ceramics expert David Rago began dealing in American decorative ceramics at a flea market in his home state of New Jersey at the age of seventeen. He founded Rago Auctions in 1984 and now is partner at Rago/Wright, which owns the three strongest independent auction brands in the industry: Rago, Wright, LA Modern Auctions (LAMA) and Toomey & Co.

With more than five decades of experience handling 20th and 21st century works, David Rago and Suzanne Perrault, his partner and wife, have established Rago as the preeminent venue for American and European art pottery, American craft furniture, and contemporary glass works. David has authored several titles on fields of collecting, including: *American Art Pottery*, *The Arts and Crafts Collector's Guide*, *The Fulper Book*, and *Collecting Modern*. Further, he takes his passion on the road, lecturing nationally and appearing regularly on the PBS series, *The Antiques Roadshow* since its inception in 1996.



Heritage Ballroom
9:00pm

***Stickley's
Craftsman Houses
and The People
Who Built Them***
by Ray Stubblebine

Ray Stubblebine is not only an award-winning photojournalist who worked for The Associated Press and Reuters in a 50-year career - he has collected Stickley furniture and studied the houses of Stickley since 1982.

Mr. Stubblebine has served on the Board of Trustees of The Craftsman Farms Foundation, The Stickley Museum at Craftsman Farms for 26 years and on the Stickley Museum's Advisory Board. He is the photographer for *The Fulper Book* with text by David Rago; *Metal Overlays by Handel* by Robert DeFalco; and *Furniture of the Arts and Crafts Movement* (Revised Edition) by David Cathers. He has written about Stickley homes in the *Old House Journal*, *Style 1900* and *American Bungalow* magazines. Notably, he and his wife Ula restored and lived in a Craftsman Home for 36 years before retiring in 2018. This will be his fourth time before this audience as a speaker; Ray has spoken on Stickley's Homes and his ongoing research in 1992 and again upon the launch of his 2006 book "Stickley's Craftsman Homes." He speaks to us today as his new book, *MORE Stickley's Craftsman Homes* is being released for the first time here this weekend.



Barbara Gerr Antiques

ARNIE SMALL & BARBARA GERR

Specializing in American Art Pottery



Contact us:

Office: 609.407.9997

Cell: 609.432.1231

Email: potsinacnj@aol.com



BarbaraGerrAntiques

www.barbaragerrantiques.com

FRIDAY NOTES, IDEAS, QUESTIONS...

Take notes during the seminars or discussion groups or write down your thoughts for the day...

HAMMERED & HEWN

Masters in Early 20th Century
Metalwork & Lighting



Always buying Arts & Crafts: Metalwork, Lighting,
Pottery, Furniture, Van Erp, Roycroft, Stickley, etc.

hammeredhewn.com

STICKLEY COPPER



Specializing In Arts & Crafts Period
Metalwork, Lighting and Decorative Arts

www.StickleyCopper.com

Kindred Styles Antiques



Gene & Jody Zwiefel
Rock Island, IL

www.kindredstylesantiques.com

309.236.4287

*Carefully procured period items
ready to enhance your collection*

PAINT BY THREADS



Hand Embroidered Textiles
Pillows • Table linens • Curtains
Kits • Custom Designs • Art



www.paint-by-threads.com 951.545.7451



Handcrafted
Copper
in the
Arts & Crafts Style



Susan Hebert Imports

503-248-1111

www.ecobre.com/ac

Preservation Society of Asheville Hosts Historic Homes Tours

Sat. Feb 17 1:00 - 5:00pm
Sun. Feb. 18 1:00 - 5:00pm
(Please board 15 minutes in
advance at the
Sammons Wing entrance.)

The Preservation Society of Asheville is pleased to offer a number of unique historic homes for this year's Arts & Crafts Conference house tour.

Advance reservations are required, since seating is limited. Spaces were filled on a first-come, first-served basis. To check on the availability of seats on either tour and to confirm your registration, please stop by the Preservation Society's information table near

the Arts & Crafts Registration Desk in the Sammons Wing.

The Sunday tour is the same as the one on Saturday. The cost of the tour is \$50 per person. All proceeds go to the Preservation Society to fund their efforts to protect and preserve Asheville and Buncombe County's architectural heritage.

All of the homes of the 2024 tour are located in the historic Montford neighborhood, a well known neighborhood in Asheville featuring multiple homes that are examples of design principles and construction practices of the early 20th century, including those of the Arts & Crafts Movement.

Participants should be able to walk up to three city blocks



and negotiate stairs and public walkways. The tour transportation will run approximately every 30 minutes starting at 1:00 pm (last shuttle leaves at 3:30 pm) so that you can do the tour between your other conference activities. Please dress appropriately for the weather and wear comfortable shoes, for some walking may be required between the bus and each stop.

SOUTHLAND LOG HOMES
AND
HEARTH STONE
EXTRAORDINARY HOMES

BRINGING TOGETHER THE DESIGN OF THE PAST WITH THE
TECHNOLOGY OF THE PRESENT... BECAUSE TRUE
CRAFTSMANSHIP NEVER GOES OUT OF STYLE

SOUTHLANDLOGHOMES.COM 865.789.3910

Gudger House: A Success Story for PSABC and Asheville

Formed in 1976, The Preservation Society of Asheville and Buncombe County (PSABC) was created out of local interest in historic preservation brought on by the U.S. Bicentennial and local threats to neglected buildings and sites.

The early accomplishments of PSABC include the creation of a local office of the N.C. Dept of Cultural Resources in Asheville, convincing the city council and county commission to develop a local landmark and historic district commission, and assigning the Montford neighborhood as a local historic district.. One house that was pivotal in the PSABC's history of Preservation was Montford's



Gudger House manned by early volunteers.

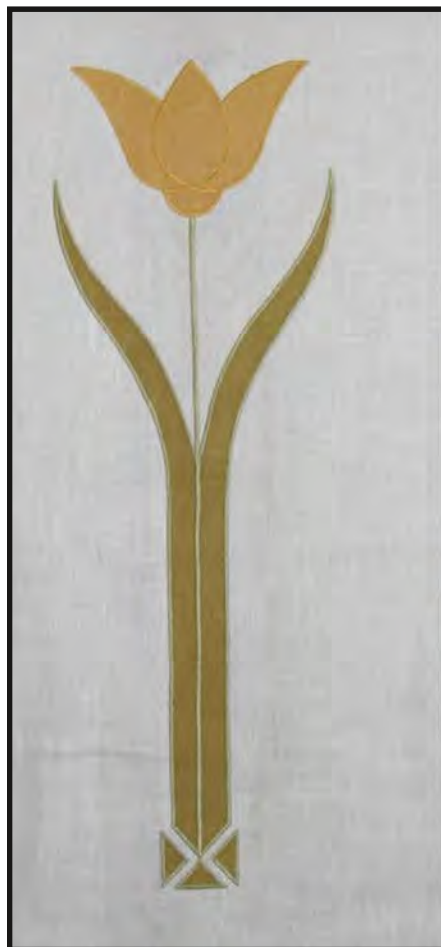
own Gudger House (shown above), a deteriorating house named after Asheville postmaster Henry Lamar Gudger.

In 1890s Asheville, Postmaster Gudger created the Queen Anne Victorian house on the land

he purchased near the entrance to the Montford neighborhood, built with gables and towers. The house remained in the Gudger family until the 1950s, unfortunately fell into disrepair and became condemned. The Gudger legacy was all but lost until 1978, when the house

was acquired by PSABC. Thankfully, due to the efforts of the early group's volunteers, Gudger House was stabilized with all volunteer labor. The Preservation society continued to care for the house, until the Legal Aid service of Buncombe County

(Continued on page 51)

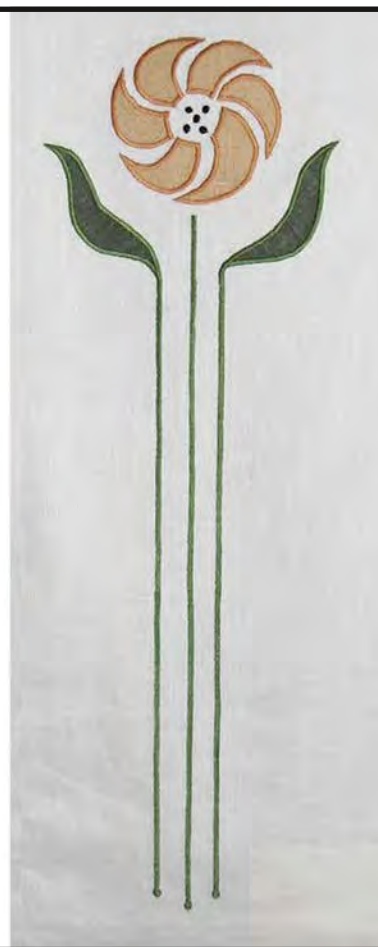


MELTON WORKROOM Prairie Textiles



Custom Curtains, Roller Shades.
Roman Shades, Table Linens,
Pillows, Bedding
and Selected Hardware
for the Arts & Crafts Home.

www.meltonworkroom.com • 213-614-1757
info@meltonworkroom.com



Daily Small Group Discussions

Among the most popular aspects of this conference are our daily Small Group Discussions, which provide us with the opportunity to sit down with other Arts and Crafts enthusiasts who share our passions and our interests. We purposely schedule several of these simultaneously to keep the numbers small so that the discussions are personal and lively. The meeting rooms are also small, so arrive early -- and have a second choice ready, if needed. Our wonderful discussion leaders are volunteers, not seminar presenters, so they will ask you to share your experiences and your opinions.

Friday 11:00am-Noon

Art Pottery Collecting 101

with Christine Boone and
Patti Bourgeois of the AAPA
Skyline Room - A (Sammons)

Spotting Furniture Fakes, Forgeries & Repairs

with N. Gordon Gray
Presidents Lounge (Sammons)

What's the Best Online Resource for Beginning Collectors?

with Michael Lehr
Heritage Ballroom - A
(Sammons)

Paper Arts- Ephemera of Roycroft and the Arts and Crafts Movement

with Robert Rust
Heritage Ballroom - C
(Sammons)

Saturday 4:30-5:30pm

Your Landscape and the Environment: an Arts & Crafts Perspective

with Rick Taylor
Skyline Room (Sammons Wg.)

Remuddling, Remodeling or Restoration?

with Norman Blankenship
Roosevelt Room K (Vanderbilt)

Collecting the Wooden Lamps of the Arts & Crafts Movement

with Jill-Thomas Clark
Roosevelt Room - L (Vanderbilt)

A Restoration Update for the Gustav Stickley House

with Amy Shook Perez
Wilson Room - O (Vanderbilt)

Head, Heart and Hand: How Does it Enrich Our Lives?

with Andre Chaves and Dianne Ayres
Wilson Room - P (Vanderbilt)

Sunday 12:30-1:30pm

Biltmore Industries: The Rest of the Story

with Bruce Johnson
Skyline Room (Sammons Wg.)

The Arts and Crafts Philosophy: Limited or Limitless?

with Pat Bartinique
Roosevelt Room - K
(Vanderbilt Wing)

Time is money: DIY tips to save \$\$ on your appraisal

with Tommy McPherson
Roosevelt Room - L
(Vanderbilt Wing)

**** If you want to bring your own items to show during the Small Group Discussions in the Vanderbilt wing during show hours, please check them in the 8th floor Vanderbilt Wing ticket booth before and after the discussion session.***

Please note: this is still a partial list at the time of publication. Apologies for the inconvenience. For the full and complete schedule of Small Group Discussions, please see the posted sign at the Sammons Wing Registration Desk or visit the conference website online: Arts-CraftsConference.com.

Join The Stickley Museum at Craftsman Farms
for a special Small Group Discussion:

"Behind the Scenes at Craftsman Farms"

Saturday 2:30-3:30 Skyline Room

with Vonda Givens, Executive Director,
The Stickley Museum at Craftsman Farms



Things to remember before you attend a Small Group Discussion session...

1. Come ready with questions ahead of time regardless of experience level. These discussion expert leaders who have years of experience are here to help you understand the tricks of the trade and the tips that they wished they would have known starting out as new collectors. Many of the people who attend these sessions are also experienced. If you don't understand a term or phrase, please don't be afraid to ask what it means. Odds are some of the other folks in your group might be thinking the same thing.

2. Please consider bringing a photo of your item in question rather than the real thing. If you attend a discussion group in the Vanderbilt wing, you may need to check your item into the 8th floor ticket booth until your session begins. There are people posted at the start of the Antiques Show who will ask to see your receipt if they see you leaving with an item, assuming you've bought it at the show.

3. Bring paper or use the note sections of this catalog to take notes. If they are able, leaders may have

handouts for you to take home, but if not, you should write down tips and contact information of people you'll meet here.

4. If your group's discussion becomes heated, please remember to keep calm. We are all capable of getting our point across without making things personal. We can always agree to disagree, but remember that you always learn something new every time you attend this beloved conference.

5. Please double check the schedule ahead of time to see where your session is located. The sessions are spread out all over the hotel and it's frustrating to walk all the way over to the Vanderbilt wing when it was located in the Sammons wing.

6. Lastly, make sure to plan out your day ahead of time. There are so many activities to take advantage of while you are here and not all them repeat. Please see each day's schedule to ensure you are making the most of your time at this conference.



Character & Craftsmanship

MOTAWI
TILEWORKS

DISTINCTIVE AMERICAN ART TILE FOR HOMES AND PUBLIC PLACES
734.213.0017 | motawi.com | [f](#) [p](#) [i](#) [g](#) [+](#)

Saturday Schedule

9:00-10:00am	10:00-11:00am	11:00-Noon	Noon-1:00pm	1:00-2:00pm	2:00-3:00pm	
Seminar: <i>Partners in Beauty: The Boys, The Art, The Joy of Cathedral Oaks</i> by Dr. Richard Mohr Heritage Ballroom Sammons (p. 36)	Seminar: <i>Masterpieces of Simple Design: The Furniture of the Two Red Roses Collection</i> by Andrea Morgan Heritage Ballroom Sammons (p. 36)	Lunch options on page 72.	Conference Shows: Arts & Crafts Antiques Show 8th floor, Vanderbilt Wing (p. 74) Contemporary Craftsirms Show 8th floor, Vanderbilt Wing (p. 76) Books, Magazines & More Show 8th & 10th floors, Vanderbilt Wing (p. 79) Book Club Discussion: 2:00 - 3:00pm (p. 22) Roosevelt Room K (Vanderbilt Wing) Silent Auction: 8th floor atrium, Vanderbilt Wing (p. 12) Demonstrations: Taft Room, Vanderbilt Wing (p. 24)			
6:30am - 9:30am The Continental Breakfast will be in the President's Lounge, just beyond the Heritage Ballroom. Just show your room key!			Preservation Society House Tour Sammons Wing Entrance (last bus leaves at 3:30) 1:00 - 5:00pm (p. 20)	Book Club Discussion #2 <i>The Personal Librarian</i> 2:00pm - 3:00pm <u>Vanderbilt Wing Roosevelt Room K</u> with Pat Bartinique		

Organizing your Saturday

Saturday is chock full of Arts & Crafts activity, so make sure you have your day organized and you allow time for yourself to get to activities early. For your convenience and organization, here are some categorized guides to help you prioritize activity on this busy day.

Start your day ready (see page 38 for a space to take notes) for two seminars starting at 9:00am in the Heritage Ballroom.

For Art Enthusiasts:

- The Shows will open at Noon on Saturday. Check out the antique and contemporary art works available to purchase.
- The Asheville Art Museum will present "A New Approach to the Art of Arts & Crafts" at 3:00pm. Take the 2:00pm bus early to enjoy included admission to the museum's collection. (p.58)
- The Saturday Evening Movie and introduction by Patti Bourgeois explore the Japanese woodblock print legacy of artist Hokusai. (p.38-39)

For Book lovers:

- Check out the Books and More show to purchase from The Gamble House Bookstore and Bruce Johnson's table. Authors will also be there to sign their books. (p.20)
- The second book club discussion kicks off with Pat Bartinique discussing *The Personal Librarian*, a *New York Times* bestseller. (p. 22)

For fans of architecture:

- The Historic House Tour, a fundraiser event for the Preservation Society of Asheville and Buncombe County, starts today. It starts at 1:00pm with the bus picking up by the Sammons wing sliding glass doors and explores the historic Montford neighborhood. The last bus picks up from the Sammons wing entrance at 3:30pm. Purchase your tickets last minute at the PSABC table across from the Sammons Reg. Desk.
- Catch the Gustav Stickley House update and the special Behind the Scenes at Craftsman Farms session for a look at what it takes to preserve a historic site in modern times. See Small Group Discussions (p.32)

Saturday Schedule

3:00-4:00pm	5:00-6:00pm	6:00-7:00pm	7:00-8:00pm	8:00-9:00pm	9:00-10:00pm
Conference Shows: Arts & Crafts Antiques Show 8th floor, Vanderbilt Wing (p. 74) Contemporary Craftsirms Show 8th floor, Vanderbilt Wing (p. 76) Books, Magazines & More Show 8th & 10th floors, Vanderbilt Wing (p. 79) Book Signings <i>See page 20</i> 8th floor Vanderbilt Silent Auction: 8th floor atrium, Vanderbilt Wing (p. 12) Demonstrations: Taft Room, Vanderbilt Wing (p. 24) Biltmore Industries Tour: 3:00-4:00pm (pg. 16)		Dessert Social Hour: Presidents Lounge Sammons Wing 6:30 - 8:00pm Dinner Options <i>on page 72.</i>		Special presentation: 8:00pm Hokusai's Oeuvre <i>presented by Patti Bourgeois of Japanese Woodblock Print Gallery</i>	
Asheville Art Museum Presentation: 3:00- 4:00pm (p. 58) Small Group Discussions: 4:30 - 5:30pm (p. 32)		 Documentary Movie: 8:20pm Tom Killion's Journey to Hokusai The Heritage Ballroom Sammons Wing (p. 40) Free admission sponsored by the non-profit Arts and Crafts Research Fund			


Roycroft Renaissance Artisan




keithrustillustration.com

Saturday Seminars:
Heritage Ballroom
9:00am

Partners in Beauty: The Boys, The Art, The Joy of Cathedral Oaks

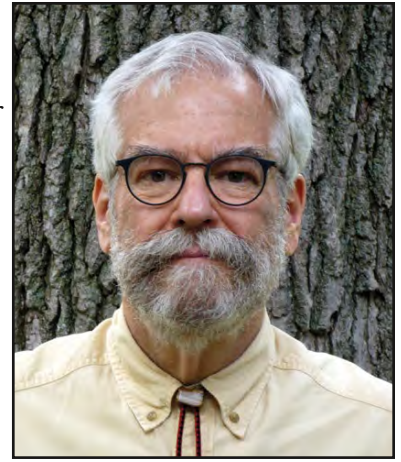
by Dr. Richard Mohr

Richard D. Mohr is most recently the author of *The Splendid Disarray of Beauty: The Boys, the Tiles, the Joy of Cathedral Oaks: A Study in Arts & Crafts Community*, the second title in RIT Press' newly launched Arts & Crafts Book Series.

Dr. Mohr has been a speaker at the Grove Park Inn five times, presenting two seminars on the glories of American art tiles in general, the distinctive uses of art tiles by Prairie School architects, the A&C design contributions of Anne Van Briggie, and on the aesthetics of A&C and rustic lodges of the West. Since 1993, he has been a frequent contributor to the *Journal of the American Art Pottery Association*.

His past books include *Pottery, Politics, Art: George Ohr and the Brothers Kirkpatrick* (U. Illinois Press 2003). He has two book projects on the stocks: one examines the intersection of industrial arts education and the Arts & Crafts movement in America and the other tentatively titled *Razzle Dazzle*, is on the arrival of big crystals in American ceramics.

He and his hubby of forty-five years, Robert Switzer, live in Urbana, Illinois, where Mohr is Professor Emeritus of Philosophy and of the Classics at the University of Illinois.



Heritage Ballroom
10:00am

Masterpieces of Simple Design: The Furniture of the Two Red Roses Collection

by Andrea Morgan

Serving as the Director of Operations at the new Museum of the American Arts and Crafts Movement (MAACM) currently celebrating its second year, Andrea Morgan is part of the team who executed the opening of the world's only museum dedicated to the American Arts and Crafts movement.

A graduate of The University of Texas at Austin with a Master's Degree in Museum Education, Ms. Morgan has over 10 years of museum experience. Beginning her career at the Blanton Museum of Art in Texas and the Denver Art Museum, she then expanded her expertise in Grand Rapids, Michigan, known as a mecca of furniture production. Ms. Morgan then came to Florida, working at the Glazer Children's Museum before parlaying her education experience into a director's role at the MAACM.

Today, Ms. Morgan continues to employ her vast expertise by building upon MAACM's strong foundation in expansion and growth, fulfilling its mission for many years to come.



Sell with Us!

consign@ragoarts.com
609 397 9374

consign@toomeyco.com
312 563 0020

Rago and Toomey & Co. are the premier venues for American and European Art Pottery, consistently setting record-breaking results across a vast and diverse array of exquisite works. Elevate your collection and discover its true value – contact our specialists for a complimentary and comprehensive evaluation today!



**MARY SHEERER FOR
NEWCOMB COLLEGE POTTERY**
Important lamp with Louisiana Irises
result: \$262,500



**FREDERICK HURTEN RHEAD
FOR AREQUIPA POTTERY**
Important vase
result: \$200,000



GEORGE E. OHR
Exceptional and Tall pitcher
result: \$107,100



GRUEBY FAIENCE COMPANY
Important covered jar with moths
result: \$138,600



**ALBERT R. VALENTIEN
FOR VALENTIEN POTTERY**
Rare, Exceptional and Large vase
with California poppies
result: \$75,600



**ANNIE ALDRICH AND SARAH TUTT
FOR MARBLEHEAD POTTERY**
Important Ipswich vase
result: \$250,000

RAGO

333 Main St
Lambertville NJ 08530
609 397 9374
ragoarts.com

WRIGHT

1440 W Hubbard St
Chicago IL 60642
312 563 0020
wright20.com

LAMMA

16145 Hart St
Van Nuys CA 91406
323 904 1950
lamodern.com

Toomey & Co.

1440 W Hubbard St
Chicago IL 60642
312 563 0020
toomeyco.com

RAGO / Toomey & Co.

Saturday, Feb. 17th
Heritage Ballroom
8:00pm

*Special Introduction and
Presentation*

Hokusai's Oeuvre

by Patti Bourgeois of Japanese
Woodblock Prints Gallery

See Patti with Christine Boone talk about the
basics of Collecting American Art Pottery on
Friday, February 16th at 11:00 am.

(See times of Discussion session schedule on page 32.)



Fine Wind, Clear Morning from Hokusai's Thirty-six Views of Mount Fuji series. Courtesy: Wikimedia Commons.

Patti Bourgeois, a collector and seller of American Art Pottery, is the owner of PatsPots and Japanese Woodblock Prints Gallery in Westport, Massachusetts.

A longtime collector of Japanese woodblock prints and a student of the history of Japanese printmaking, she is always humbled by how much there is to learn about the prints, the artists, their history and styles. Patti Bourgeois will discuss Hokusai's 'Manga (first coined by Hokusai to describe his sketches) because he began sketching at an early age and his 'oeuvre' clearly developed from his manga sketches, which consumed his days and nights most all of his life. "He was always striving to be a great artist, stating near the end of his life '*...if heaven would grant me ten more years, I shall become a real painter.*'"

SATURDAY NOTES, IDEAS, QUESTIONS...

Take notes during the seminars or discussion groups or write down your thoughts for the day...

Saturday Documentary
Heritage Ballroom
8:20pm

Tom Killion's *Journey to Hokusai*

Featuring Tom Killion, printmaker
Directed by Chikara Motomura

Free admission provided by the non-profit
Arts & Crafts Research Fund.



Promotional poster for "Journey to Hokusai"



Documentary director Chikara Motomura films printmaker Tom Killion as he practices the art of woodblock printmaking in the footsteps of printmaker Katsushika Hokusai.

The works of early 19th century woodblock printmaker Katsushika Hokusai are internationally treasured by art enthusiasts, capturing the beauty of the beloved mountains of central Honshu, Japan. Hokusai's iconic work, "The Great Wave Off Kanagawa", has stood the test of time around the world. In his lifetime, Hokusai studied not only wood-carving and Ukiyo-e prints and paintings, but he also studied European techniques from French and Dutch copper engravings. He eventually changed his style from painting courtesans to focusing on landscapes and capturing the lives of

people in his community. The focus on landscapes changed not only his personal style, but made an impact on the style of traditional Ukiyo-e prints, influencing future countless printmakers.

One such printmaker in California took his admiration of the Hokusai style overseas on a journey to discover his creative process. In the documentary *Journey to Hokusai* (2022), directed by Chikara Motomura, artist and printmaker Tom Killion travels to Kyoto to study under a fifth-generation master printer to learn the techniques of his inspirational master Hokusai. Killion left behind his German printing press and oil-based ink for the more traditional method of carving and printing by hand. During the course of the documentary, we see Killion exploring the history of Japanese printmaking, talking with a papermaker whose business has a 1500-year legacy, and travelling to the village where Hokusai spent his final days.

The Bay Area artist and Stanford University alumni had an early interest in the works of Hokusai, having been exposed to his prints and exhibitions of Chinese calligraphy in his San Francisco-area upbringing. His linoleum carvings of his native Mt. Tamalpais, paired with haikus he had penned, were among his early printings. A book featuring those prints was eventually placed in the bookstore "Californiana" in San Francisco's Union Square where

(continued on page 44)

The Year 2023 in Arts & Crafts

by Kate Nixon

Feb. 17th - 19th

36th National Arts & Crafts
Conference and Shows at the Grove
Park Inn in Asheville, NC.



April 30th

The Bungalow Heaven House
Tour in Pasadena, CA
returned to in-person
house tours.



July 12th - 15th

The Pottery Lovers
Show returned to
Zanesville, OH.

February 28th

The Ellison Collection
auction at Rago Arts estab-
lished new world records
for works made by George
Ohr and Pewabic Pottery.

June 14th

Toomey & Co's Early 20th
Century Design auction
highlighted the Collection of
William and Patsy Porter.

April 26th - 30th

The annual American Art Pot-
tery Association Convention
came to Syracuse, NY with
speakers and a dealer show.

January 19th

An important record was achieved for
a Newcomb College ceramic work by
Leona Nicholson and Mazie Teresa Ryan
at Rago Arts. Nichols' early and large
vase with magnolias sold for \$100,800
and Ryan's rare vase with alligators sold
for \$151,200.



May 9th

Roycroft Inn falls
under new owner-
ship by historic
preservationist
Douglas Jemal.

June 25th & 26th

The Roycroft Sum-
mer Festival and The
Roycroft Campus Art
& Antiques Show
kicked off the sum-
mer season at the
Roycroft Campus.





August 23rd

"Roycroft: Life in Abundance, The Collection of Richard Blacher," an important collection of Roycroft-made books was auctioned off to an enthusiastic audience of Roycroft collectors.



Watch Bruce's presentation!

Missed it? Scan it and watch it on YouTube!

August 5th - 11th

"Arts & Crafts In August" went online for the third time and ended with the first hybrid session live from the Skyline room at the Grove Park Inn with Bruce Johnson presenting on the Antiques of the Grove Park Inn.



September 29th - 30th

Historic Deerfield of Deerfield, MA presented its conference on the Arts & Crafts Movement in the Northeast, highlighting Madeline Yale Wynne's masterwork "Garden of Hearts"(above).

September 23rd - 24th

The 23rd Twin Cities Arts & Crafts Show - the top Arts & Crafts show in the midwest - took place at the Minnesota State Fairgrounds in St. Paul, MN.

November 9th

French auctionhouse Piasa held the auction "Arts & Crafts - Made In America," featuring works from Gustav Stickley and Charles Limbert.

September 7th

The Museum of the American Arts and Crafts Movement turned two!



July 21st

"Dignity & Grace: These Humbler Metals," an exhibition on Arts & Crafts metalwork, opens up at the Museum of the Arts & Crafts Movement.

October 7th

The Craftsman Gala, an annual fundraiser for the Stickley Museum at Craftsman Farms, raised \$165,000 - meeting their goal to help with construction and finally open the museum to the public.



September 27 — October 1

The Annual Arts & Crafts Conference from Initiatives in Art & Culture traveled to Detroit, MI.



Educational Displays

The display cases - an annual tradition at the conference - have been moved to the 8th floor Vanderbilt Wing to provide better security for their contents, to improve their visibility, and to reduce congestion around them and in the Great Hall. This year, the displays will be spread throughout the shows. Please take advantage of this unique, one-time educational opportunity before you leave.

Peters and Reed Pottery: Featuring the Collection of Linda Brouwer Carrigan

by the American Art Pottery Association

The American Art Pottery Association is proud to present an exploration of Peters and Reed pottery, featuring the unique and beautiful collection of Linda Brouwer Carrigan. Peters and Reed Pottery was created in 1899 by John D. Peters and Adam Reed in South Zanesville, Ohio, utilizing the local red clay to create functional vessels. Only later were glazes applied to produce ceramic decorative art works.

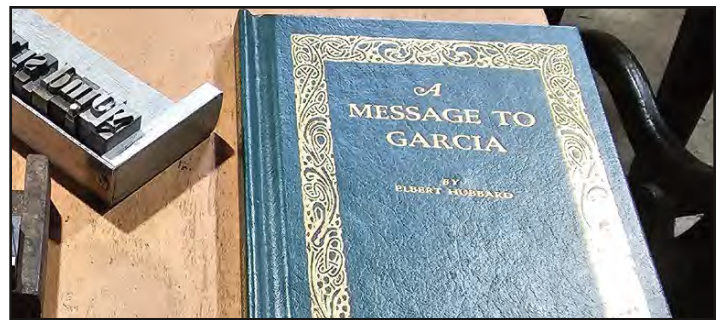
Within this display case, enthusiasts of Arts and Crafts pottery will find the colorful works from

(continued on p. 67)



"A Message to Garcia": A History of Then & Now

by the Roycroft Campus Corporation



The recent announcement that Elbert Hubbard's *A Message to Garcia* is being reprinted at the Roycroft Print Shop for the first time since 1938 has excited Roycroft book collectors worldwide. This year, we are dedicating one of our display cases to this historic book. "A Message to Garcia: A History of Then & Now" will show several examples of the historic book in all its forms and revisions and in different sizes, printings, bindings, and materials showing the legacy of this respected work in the history of American literature.

First published in 1899 without a title in an issue of *The Philistine*, the book has not only been

(continued on p. 67)

From Hillside to Smithfield: Folk Art to Fine Art Courtesy of Chemical Engineering!

curated by Tommy McPherson

There is a renewed interest on North Carolina pottery firms Hillside and Smithfield Pottery, collector Tommy McPherson presents his own large collection of North Carolina art pottery. The display will include blue crystalline and Chrome red examples, many of the examples were made before World War II. See one of the largest collections of a North Carolina pottery firm in the Antiques Show in the Grand Ballroom.



American
**Art Pottery
Association**


44th Annual Convention.

Seminars, tours, show and sale.

**Tuesday, April 30th through
Saturday May 4, 2024**

The Kingsley Hotel

Bloomfield Hills (Detroit), Michigan

for more info: www.aapa.info or 

Journey to Hokusai (continued)



Printmaker Tom Killion. Photo: Chikara Motomura.

his works finally caught the public's eye. Killion also collaborated with fellow Bay Area native and Pulitzer Prize-winning poet Gary Snyder on a number of publications, including 2015's *California's Wild Edge: The Coast in Prints, Poetry, and History* and *The High Sierra of California*. Tom's friend, director Chikara Motomura, wanted to create a film about his native Japan and

encouraged his friend to travel with him. He soon realized that Tom's search for printmaking techniques made a perfect subject for his film. In a 2020 interview with *Good Times Magazine*, Chikara says "He told me he had always wanted to learn the traditional Japanese hand-printing technique by taking a workshop. A couple of years later, I was thinking about making a documentary about something to do with Japan. So I approached Tom to see if he was still interested."

The 2022 documentary, which celebrates the handcrafted creative process with all of its frustrations and victories, the Ukiyo-e style, and the history of the printmaking icon, will be shown in the Heritage Ballroom in the Sammons Wing of the Grove Park Inn on Saturday, February 17th. Preceding the film at 8:00 PM, Patti Bourgeois of Japanese Woodblock Print Gallery in Westport, MA will give a presentation on Hokusai's early drawings and sketchings.

Admission to the evening's events - film and presentation - is free to the general public, thanks to the Arts & Crafts Research Fund.

READ REDUX

The Arts & Crafts Revival
Judith Budwig • Jeffrey Preston



392 pages
734 photographs

New copies available at: ReduxACRevival@gmail.com

“It has become the most talked about book of the Arts & Crafts movement. Engaging, fascinating, insightful and controversial.”

-Bruce Johnson



tours



classes



shopping



roycroftcampuscorp.com
(716) 655-0261



EXPERIENCE ROYCROFT

A National Historic Landmark
in the Heart of
East Aurora, New York

dining



occasions



getaways



roycroftinn.com
(716) 652-5552



Sunday Schedule

9:00-10:00am	10:00-11:00am	11:00-Noon	Noon-1:00pm	1:00-2:00pm	2:00-4:00pm
Seminar: <i>The Butterfly Effect: Adelaide Alsop Robineau's Empowering Effects on the World of Ceramics and Beyond</i> by Garth Johnson Heritage Ballroom Sammons (p. 48)	Seminar: <i>Homespun Heroines: Eleanor Vance, Charlotte Yale, and the Biltmore Industries Legacy</i> by Bruce Johnson Heritage Ballroom Sammons (p. 48)	Conference Shows: Arts & Crafts Antiques Show 8th floor, Vanderbilt Wing (p. 74) Contemporary Craftsirms Show 8th floor, Vanderbilt Wing (p. 76) Books, Magazines & More Show 8th & 10th floors, Vanderbilt Wing (p. 79) Silent Auction: Item Pickup 11:00am - 2:00pm 8th floor atrium, Vanderbilt Wing (p. 12) Demonstrations: Taft Room, Vanderbilt Wing (p. 24)			
6:30am - 9:30am The Continental Breakfast will be in the President's Lounge. Get there early to fill up before the seminars!		Small Group Discussions: 12:30 - 1:30pm Please see p. 32 for a complete list of discussion group topics.			



CARREAUX DU NORD

ART TILE

FOR ARCHITECTURE AND ACCENT

920-553-5303

carreauxdunord.com

Preservation Society House Tour

1:00 - 5:00pm (last bus leaves at 3:30)
 Sammons Wing Entrance (p. 20)

Walking Tour: Biltmore Industries

1:00 - 2:00pm
 Please see p. 16 for more information about the Biltmore Industries tour.

Like Your Room?

Reserve It For Next Year's
 Arts & Crafts Conference.

Call the Omni Reservation
 Department TODAY at (800) 438-5800.

Arts-CraftsConference.com

February 21st - 23rd, 2025

Our gallery offers vintage woodblock prints by Japanese artists, some Americans, and others working in the Arts & Crafts style.



JAPANESE
Woodblock Prints
.GALLERY



Hiroshi Yoshida (1876-1950)
'Kamogawa in Kyoto' d1933

*"It is no secret that the prints choose whom they love
and there is then no salvation but surrender."
~Frank Lloyd Wright*



Kawase Hasui (1883-1957)
'Senjo Plain, Nikko' 1st Edition d1937

Patti Bourgeois
PO Box 1226 Westport, MA 02790
508.679.5910 * 774.644.0195
JWPGallery@charter.net * www.JapaneseWoodblockPrints.Gallery

We invite you to browse our selection of American and European Art Pottery



Pats Pots
One treasure at a time.

Patti Bourgeois
PO Box 1226 Westport, MA 02790
508.679.5910 * 774.644.0195
PatsPots1997@charter.net
www.PatsPots.com

Sunday Seminars:
Heritage Ballroom
9:00am

***The Butterfly Effect:
Adelaide Alsop
Robineau's
Empowering Effects
on the World of
Ceramics and
Beyond***
by Garth Johnson

Garth Johnson is the Paul Phillips and Sharon Sullivan Curator of Ceramics at the Everson Museum of Art in Syracuse, New York. He is also an adjunct arts instructor at Syracuse University.

With two decades employed as a professor in the field of arts, Garth Johnson has brought his vast expertise to the boardroom of many renowned associations, including the American Ceramics Circle, the Association of Academic Art Museums and Galleries, and the National Council on Education in the Ceramic Arts. By curating countless art exhibitions centering on ceramics and publishing many in-depth explorations of this field, he has established himself as a well-known expert. The author of *Flowing Beyond Heaven and Earth*, *33 Chinese Ceramists*, Mr. Johnson has also published two catalogs in 2023 on *Raymond Elozua: Structure/Dissonance* and *Sharif Bey: Facets*. Mr. Johnson will bring this storied world of ceramics to the Grove Park Inn, spotlighting the influence of Adelaide Alsop Robineau.



Heritage Ballroom
10:00am

***Homespun Heroines:
Eleanor Vance,
Charlotte Yale and
the Biltmore
Industries Legacy***
by Bruce Johnson
Advisor and Conference Founder

Bruce Johnson, the founder of the National Arts and Crafts Conference at the Grove Park Inn in 1988, has directed the shows and conference it for its first 35 years. Mr. Johnson returns to the historic hotel to tell a story about two women who not only educated the young of Asheville, but played essential roles in developing Asheville's own contributions to the Arts and Crafts movement.

Johnson is the author of more than twenty books on topics ranging from antique restoration and home improvement to the historic Grove Park Inn and the Arts and Crafts movement. In 1999, the Stickley Museum at Craftsman Farms presented him with the Als Ik Kan Award. In 2009, he was awarded the Thomas Wolfe Memorial Literary Award. His most recent book, *Biltmore Industries and Tryon ToyMakers: The Lives and Works of Eleanor Vance and Charlotte Yale*, is a tribute to two unsung pioneers of the Arts and Crafts movement in North Carolina. Bruce and his wife Leigh Ann Hamon continue to live on their small farm outside Asheville with their family of dogs, cats, and horses.



Jeffrey Preston
Judith Budwig

“It has become the most talked about book of the Arts & Crafts movement. Engaging, fascinating, insightful and controversial.”

**New copies available at:
ReduxACRevival@gmail.com**

392 pages
734 photographs

Take notes during the seminars or discussion groups or write down your thoughts for the day...

[illegible]

A Study in Sargeant:

Three Quotes From the Life of Irene Sargeant

by Kate Nixon



One of only two known images of writer, teacher and editor Irene Sargeant.

During my trip to Syracuse, New York, one of my goals was to dig into the archives of Syracuse University to unearth more about a few historical figures, famous for their contributions in the world of Arts and Crafts. In the beginning, there was Adelaide Alsop Robineau -- an icon in porcelain contributions to the early 20th century and the history of ceramics. Her works are timeless, well known to the world of art scholars and conference attendees. On Sunday, Robineau's influence will be revealed in Garth Johnson's presentation on Robineau's effects on the world of ceramics.

But it was the editor and writer known as Irene Sargeant that I was interested in. For years, I've heard her name in seminars, her name written in scholarly papers. Her writings are respected by members of this community and her articles in Gustav Stickley's publication *The Craftsman* continue to be used in research. I dug into the online archives index, excited to see the list of documents in the Irene Sargeant Papers collection, including her studies of "History of the Drama," her early notebooks filled with Italian studies, writings and translations, early articles, and my favorite of the categories: personal reminiscences from former students.

Upon arriving to Syracuse University, I learned that I could not take pictures, but I could take notes on my findings. Here is a snapshot of precisely that: my copious notes of a life lived in decorative arts.

Here are three unearthed quotes found in The Irene Sargeant Papers Collection at Syracuse

University Library's Special Collections Research Center - which emphasize not only the worth of an Arts and Crafts piece, but the expression of its creator.

"The presence of an historic object in a home is often but a display of wealth or an expression of unreasonable family pride on the part of its owner. But the object itself is eloquent for one who understands the language. It speaks of the times in which it was created. It tells what manner of men and women then lived, and relates their story clearly and without reserve."

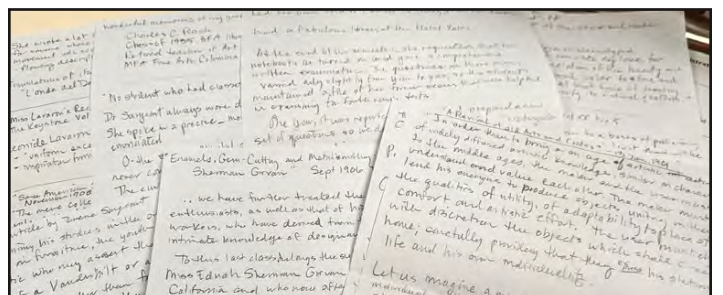
- Excerpt from "Some American Spoons and their English Ancestors" Irene Sargeant, the November 1908 issue of *The Keystone*.

"In order then to bring on an age of artistic activity of widely diffused artistic knowledge, similar in character to the middle ages, the maker and the user must understand and value each other. The maker must lend his energies to produce objects uniting in themselves the qualities of utility, of adaptability to place of comfort and artistic effort. The user must choose with discretion the objects which shall create his home; carefully providing that they express his station in life and his own individuality."

- Excerpt from "A Revival of Old Arts and Crafts" by Irene Sargeant, 13 January 1901 from the notebooks of Irene Sargeant.

"In so beginning his studies in the origin and evolution of species in furniture, the youth must not be disheartened by the critic who may assert that the highly exceptional residence of a Vanderbilt or a Gould is a place of influence hostile rather than favorable to the advancement of knowledge relating to the history of household essentials."

- Excerpt from an unpublished article by Irene Sargeant.



Books Make Their Debut (cont'd)

Grove Park Inn titles like *Tales of the Grove Park Inn* and *An Unexpected Guest*. Authors Judith Budwig and Jeffrey Preston will return to the shows to sign copies of *Redux: The Arts and Crafts Revival, 1972-2012* and Conference group discussion and book club leader Pat Bartinique will be on hand to sign her books including *Gustav Stickley – His Craft* and *The Tobey Furniture Company, Chicago, Illinois*.

The full schedule will be listed on the official conference website, Arts-CraftsConference.com. The Gamble House Bookstore will additionally have the schedule of authors available for book signings posted by their booth located by the Grand Ballroom on the 8th floor of the Vanderbilt wing.



The books and more show has grown over the years in size and in the number of authors offering their books. A full schedule of the authors will be posted on the website Arts-CraftsConference.com.

The Gudger House: A Success Story (cont'd)

Bar Association purchased the house from PSABC. The Legal Aid service eventually changed its name to Pisgah Legal Services and renovated the house, turning it into a law office providing free legal services to low-income residents. Pisgah Legal eventually moved to its current home on Charlotte St. The house is currently a home to Montford Family Law Services, providing legal services to Western North Carolina.

The early residents of the Gudger House, led by Postmaster Arthur Gudger who bought the house in 1890. Photo: Montford Family Law.



Arts & Crafts Research Fund (cont'd)

such as yourself. After years of collecting, we all have items tucked away in our closets, bookcases, and sideboards which we have not displayed for years. If donated to the ACRF, we can not only enable another collector to proudly display it in their homes, but can enable another researcher to provide us with insight into the items we have in our homes.

Bidding starts at the start of the Friday show and ends Saturday evening. Those who are lucky winning bidders may pay for and pick up their winning lot on Sunday afternoon.

Remember, all the proceeds go to a great cause: you can help fund a student of the Arts and Crafts movement and a future unforgettable seminar!

Right: A spread of silent auction items, all donated by collectors, shown Friday and Saturday of each conference. The proceeds go to the non-profit Arts & Crafts Research Fund.



35 Years of the Stickley Museum at Craftsman Farms

by Vonda Givens

Executive Director, The Stickley Museum at Craftsman Farms

In 2024, the Stickley Museum at Craftsman Farms will mark its 35th year of existence. The organization was founded in January 1989 at the same time Craftsman Farms, Gustav Stickley's country estate in New Jersey, was rescued from private development by the Township of Parsippany-Troy Hills. Craftsman Farms had been slated to become townhouses, the fate of many nearby properties, and the architectural plans were already being drawn up when the Township stepped in purchase it.

Years prior to this outcome, a feasibility study had been ordered by the Township that recommended the municipality purchase the property and hand over its management to a nonprofit. This, in fact, is what happened. The Township and the museum (then The Craftsman Farms Foundation) established a formal partnership that continues to this day, and has lasted, as I often note, longer than many marriages.

Over the 10 years since I became Executive Director, I have come to think of the rescue of Craftsman Farms from its townhouse fate as a small miracle. Real estate in northern New Jersey is highly prized. By the 1980s, Stickley's legacy was receiving national recognition, but this area is best known for its Revolutionary War history, and preservation of that heritage is both vital and costly. Adding a new multi-acre property, with nine historic buildings to preserve, would be a challenge for any municipality. It was (and remains) a significant



undertaking for the Township. What's more, while feasibility studies can be valuable, in my experience their recommendations only occasionally lead to direct action. Even good studies can end up stuck in a drawer and forgotten. In this case, the direct action was not only timely, it also led to a lasting preservation partnership.

So, in 2024, we are not just celebrating an anniversary, we are celebrating the museum's 35 years of existence that were, in no way, a foregone conclusion. Those 35 years haven't always been smooth sailing. Like most nonprofits, the museum has experienced ups and downs, successes and failures, hard years and easy years. Indeed, some of its most challenging years have been recent. Late 2019 brought a devastating ransomware attack on the museum's computer system. 2020 saw the rise of a worldwide pandemic

(continued on p. 54.)

Sell with Us!

consign@ragoarts.com
609 397 9374

consign@toomeyco.com
312 563 0020

Together, Rago and Toomey & Co. are the leading resource for Early 20th Century Design and Decorative Arts achieving record results for Arts & Crafts furniture, art glass, lighting, and more. **Contact our specialists for a free evaluation today!**



FRANK LLOYD WRIGHT
Important tall-back chair from the Susan L. Dana House, Springfield, IL
result: \$107,100



CITIZENS OF ALBERT LEA
An Appreciation of Thomas W. Lawson with Roycroft presentation box
result: \$37,800



FRANK LLOYD WRIGHT
Important weed holders, pair
result: \$250,000



HARVEY ELLIS OR LAMONT A. WARNER FOR GUSTAV STICKLEY
Rare and Important inlaid settle, model 214
result: \$107,100



TIFFANY STUDIOS
Rare Peony table lamp
result: \$151,200



ALFRED-LOUIS-ACHILLE DAGUET
Large Art Nouveau lidded box with underwater scene
result: \$37,800

RAGO

333 Main St
Lambertville NJ 08530
609 397 9374
ragoarts.com

WRIGHT

1440 W Hubbard St
Chicago IL 60642
312 563 0020
wright20.com

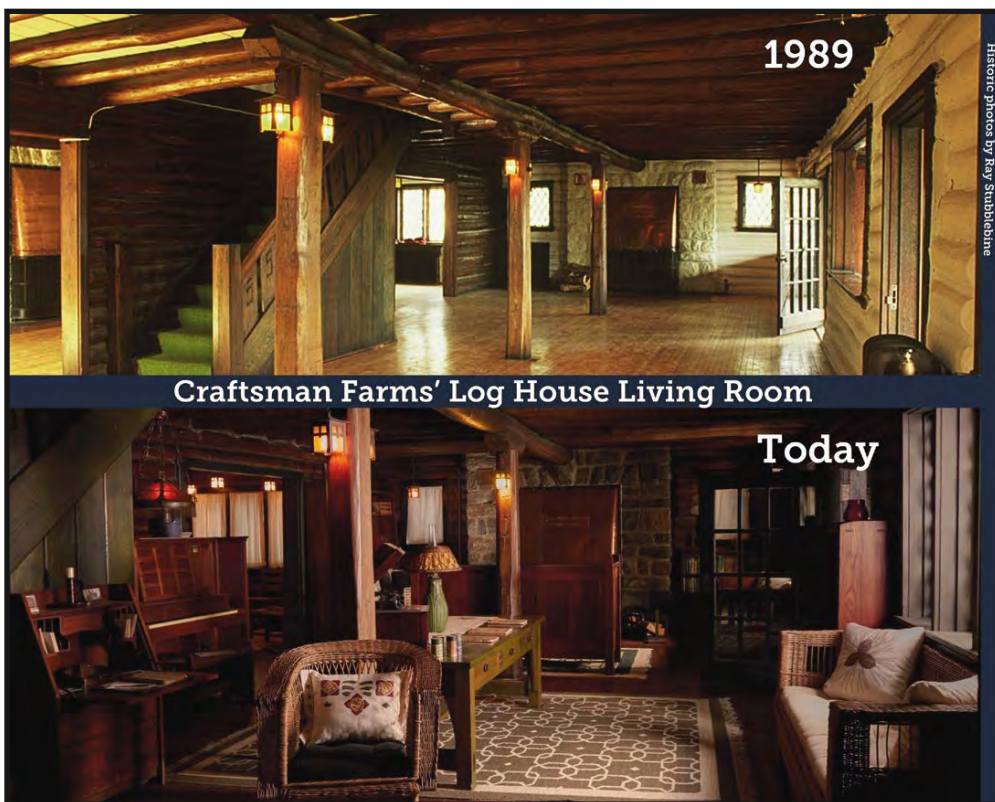
LAMA

16145 Hart St
Van Nuys CA 91406
323 904 1950
lamodern.com

Toomey & Co.

1440 W Hubbard St
Chicago IL 60642
312 563 0020
toomeyco.com

RAGO / Toomey & Co.



Craftsman Farms' Log House Living Room

Today

kitchen and rebuilt Annex, housing a visitor pavilion and The Craftsman Shop. With the 2020 completion of its Education Center, which now serves as a stately gateway to Craftsman Farms and is home to the Stickley Museum Library and a multi-use program space, the museum will re-open with an outstanding campus designed to welcome and serve visitors, support scholarship, and educate people of all ages on the present-day relevance of the Arts and Crafts movement.

Until that re-opening, we'll continue in 2024 to offer the popular programs for which the museum has become known, including a Farms Afield trip in early June to nearby New York City (watch for news

that closed the museum's doors in March. In August of that year, a tropical storm felled a massive tree that demolished a building in the heart of the property. In 2022, with generous joint funding from the Township of Parsippany-Troy Hills and the NJ Historic Trust's Preserve NJ Historic Preservation Fund, the museum began to rebuild. As of this writing however, we continue to be bogged down in construction—on a project that should have been completed in spring 2023—and struggling with the partial closure that has accompanied it. Currently, we hope to fully re-open in the summer of 2024, but along with delays, we are dealing with many unknowns.

Even with the current challenges, we are determined to celebrate during our 35th year. In time, the museum will emerge from construction with a transformed campus that will include a restored Log House

about those plans), and a Members-Only virtual travel series, Arts and Crafts Across America, spotlighting landmarks around the United States. Jonathan Clancy, the museum's Director of Collections and Preservation, will return to Saturday online classes with a survey of American Decorative and Fine Arts that will consider the context of Stickley in the history of American art and design. In the fall, we'll host another Member Day and our most important annual fundraising event, The Craftsman Gala, will double as our biggest 35th anniversary party. I hope you'll watch for news about these upcoming festivities.

And finally, (before I let the whole year get away from me!), as has become our habit over many years, our 2024 programs will be launched with a reception kicking off the 37th National Arts and Crafts Conference at the Grove Park Inn. We are thrilled to attend this year's conference with many members of our staff and Board of Trustees and to showcase The Craftsman Shop in the Books and More Show. We hope you'll stop by and say hello.



The New Education Center at Craftsman Farms completed in 2020 is home to the library and a multi-use program space. Photo courtesy of the Stickley Museum.

BRUNK

AUCTIONS

Find Your Perfect Style With Us



Whether you're downsizing or decorating your new home, we can simplify the transition. With our 40-year history and team of experts, our specialists aid in fine art, furniture, decor, jewelry, and rare collections. Embark on a journey of discovery - call us today!

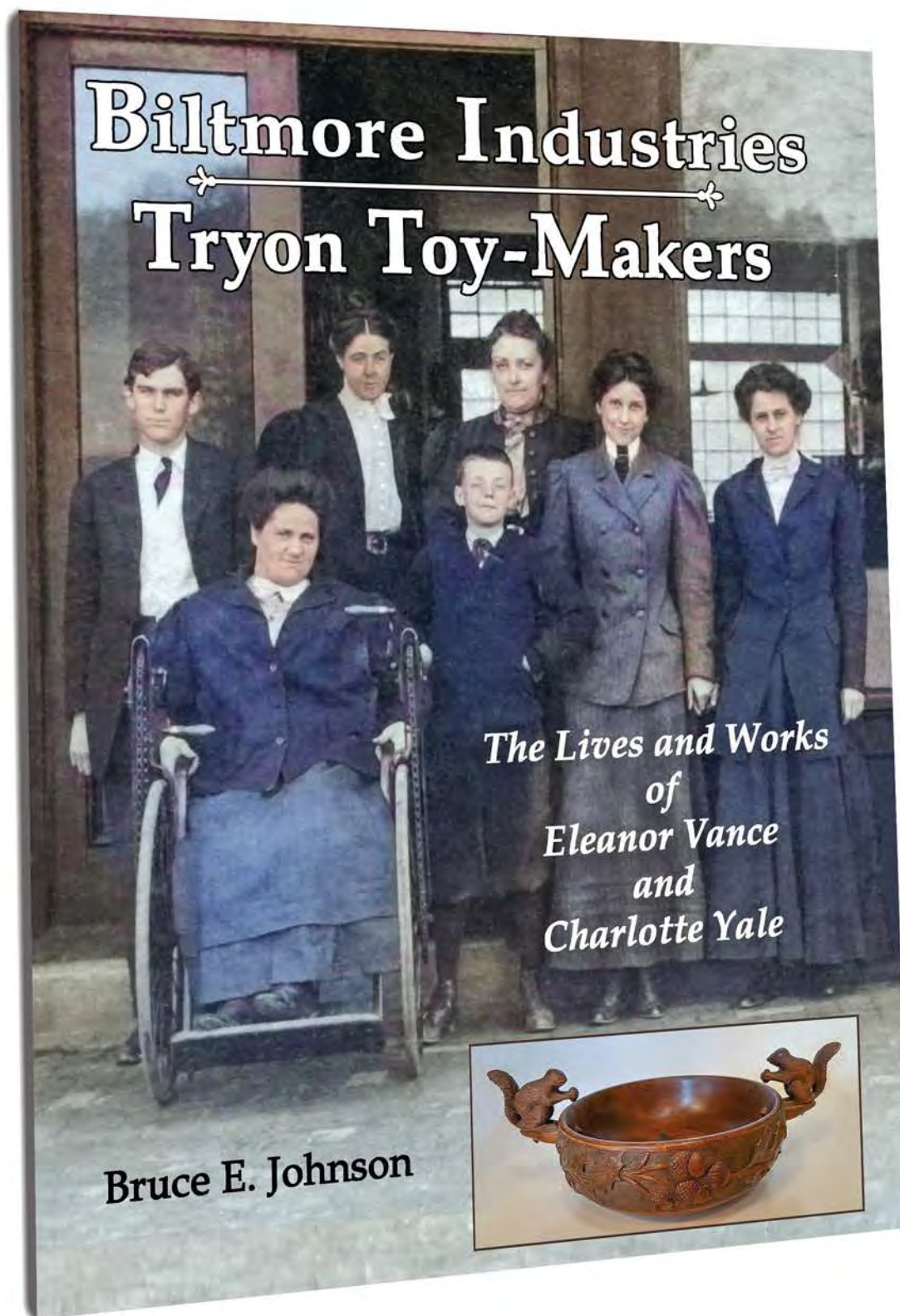
A QUESTION OF VALUE



Stories from the Life of an Auctioneer

The new book by Robert Brunk of Brunk Auctions will make its debut here at the 2024 National Arts & Crafts Books & More show at the Grove Park Inn February 16th - 18th. Robert Brunk will be among the authors signing their books at the Gamble House Bookstore booth at the shows.

“A wonderful tribute to two remarkable and unknown Arts & Crafts women.”



Hardback
copy now
available
for sale!

Includes:

- More than 220 color and vintage photographs.
- Ten key shopmark variations.
- Workers' rosters.
- Lists of items from unpublished catalogs.
- Personality profiles
- Individual studies of major pieces.

“A book
designed for
A&C scholars,
historians and
collectors.”

Show special: \$29.00 (\$45.00 retail with shipping)

Located in the Knock on Wood Publications Booth
8th floor Vanderbilt Wing beside the Silent Auction.

Asheville Art Museum Behind the Scenes:

**ASHEVILLE
ART MUSEUM**

"A New Approach to the "Art" of Arts & Crafts" with Mike McCue

Saturday, February 17th 3:00 - 4:00pm

The Asheville Art Museum (transportation provided)

Shuttle Pick up times: 2:00pm, 2:30pm, 3:00pm. Return: 4:00pm and 4:30pm by sliding glass doors in the Sammons wing across from the conference registration desk.

A lot has been said and published that is confusing about art during the era of Arts & Crafts, according to Mike McCue.

While the Arts and Crafts style can be identified in the fields of art pottery, furniture, metalware, textiles and other forms of craft, it is a different story with identifying the style in the field of art. "These different styles were being released simultaneously and in some cases, you have artists creating in two different styles," said McCue, a historian and longtime collector.

"What brought me to the realization of the Arts and Crafts movement was really moving to Asheville years all those years ago," said McCue. "We really thought of the Victorian style as being associated with a historical look, but there was no understanding of what Arts and Crafts was."

To cut through the gibberish, join Mike McCue for a behind-the-scenes program and view rare and unique artworks from the Museum's Collection. McCue's approach to the "A" in Arts & Crafts will help you understand what actually was happening during that fascinating era in America. The presentation will include a presentation with photography, fine art, prints, etchings, and books showing a wide array of examples defining the Arts & Crafts from the Beaux Arts style and from Modernism. McCue will show examples of Roycroft books and examples from Roycrofter Lawrence Mazzonovich, photography from Asheville's George Masa, works from Madeline Yale Wynne and many more.

A number of works from the Asheville Art Museum will be on display and items from McCue's personal collection in relation to McCue's talk. Other



examples include William Wallace Denslow's *Father Goose* 1899 illustrations.

Tickets to the Asheville Art Museum event can be purchased previous to the event on Friday, February 16th across from the sliding glass doors in the Sammons Wing of the Grove Park Inn.



About Mike McCue:

McCue is an independent scholar, speaker and collector with 50 years' experience in American arts. He has worked with Asheville Art Museum and other organizations to interpret and publish studies, grounded in historical accuracy, for laymen. Mike has served as Trustee for National Humanities

Council, on grants panels for National Endowment for the Arts, and on the board of American Historical Print Collectors Society where he chaired the jury for its annual Newman book award.



The Asheville Art Museum Collections

Ticket holders can see the complete Asheville Art Museum collections, featuring artists from Western North Carolina and the Appalachia area, artists from Black Mountain College, and fine handmade objects created locally including by Eastern band of Cherokee artists and contemporary crafts from the Penland School of Craft. Here is the collection by the numbers:

- 7,500+ total works
- 750+ paintings. Artists include: George Bireline, Roger Brown, S. Tucker Cooke, Pierre Daura, Joseph Fiore, Ida Kohlmeyer, McKendree Robbins Long, Beverly McIver, Jo Sandman, Roger Shimomura, Tula Telfair, and Eugene Thomason.
- 750+ drawings. Artists include: George Charles Aid, Beverly Buchanan, Minnie Evans, Gustave Falk, Lorrie Goulet, Ray Johnson, Anthony Lord, Elaine Schmitt Urbain, and George Widener.
- 1,450+ prints in a variety of techniques such as etching, lithography, screenprint, monotype, and woodcut. Artists include: Anni Albers, Josef Albers, Thomas Hart Benton, Judy Chicago, Helen Gerardia, Jerome Kaplan, Robert Rauschenberg, Joe Chris Robertson, Donald Sultan, and Ernest Trova.
- 2,250+ photographs by artists such as Hazel Larsen Archer, Bruce Davidson, Jade Doskow, Sally Gall, Walter Iooss, Robert Glenn Ketchum, David Levinthal, Joel Meyerowitz, Barbara Morgan, Benjamin Porter, Mike Smith, Joyce Tennesson, Kent Washburn, Carrie Mae Weems, and Jonathan Williams.
- 175+ sculptures and installations with cross-overs into Cherokee art, craft, and Self-taught art. Artists include: Minnie Adkins, Ruth Asawa, Cristina Córdova, David Ellsworth, Dorothy Gillespie, Lonnie Holley, Robyn Horn, Stoney Lamar, Joe Minter, Randy Shull, and Kenneth Snelson.
- 1,000+ studio and contemporary craft objects including glass, ceramic, fiber, metal, wood, and mixed media. Artists include: Rowena Bradley, Ken Carder, Dale Chihuly, William Waldo Dodge, Jr., Mary Gregory, Karen Karnes, Harvey K. Littleton, Joel Queen, Norm Schulman, Walter B. Stephen, and Billie Ruth Sudduth.

Conference Tip: Take the first bus picking up from the sliding glass doors at the Sammons wing to get to the Asheville Art Museum early. The purchase of a ticket means you get admission included, so you can explore the art collection and museum early before the presentation begins. The cafe will also be open at the museum if you want drinks and snacks to enjoy before the presentation.

Start the Presses: Restoring the Roycroft Print Shop

By Amanda Falkowski



hard work leads to success. This essay would become the third best-selling book of its time. Because of the popularity of *A Message to Garcia*, the Roycroft Campus became a tourist destination, Hubbard a celebrity, and the printing operation desperately needed to expand.

In 1901, a new 24,000 square foot Print Shop was constructed. This structure would become the main building for Roycroft printing and bookmaking until its bankruptcy in 1938: presses were located in the basement; typesetting, composing, and proofreading took place on the main level; binding, and mailing were located on the top floor; and administrative offices and artist studios were housed in the tower. From 1951-2015, the building was privately owned and operated, until its sale to the Roycroft Campus Corporation (RCC).

After an over \$700,000 campaign to repair structural elements in 2023, including repointing of exterior mortar and a partial roof restoration, the

Continued on p. 67

(Left) Necole Witcher of the RCC compares paper samples for A Message to Garcia. (Below) Condition of the top floor of the Print Shop tower before interior restoration began in December 2023.



Founded by Elbert Hubbard in 1897, the Roycroft Campus, located in Western New York, was one of the original centers of the American Arts & Crafts Movement. Since receiving National Historic Landmark status in 1986, the Campus has undergone restoration to stabilize, rebuild, and revitalize the historic structures and grounds, while also welcoming thousands of visitors seeking inspiration.

With the restoration of the historic Copper Shop now complete, our attention turns to the restoration of the historic Print Shop. The growth of the Roycroft Campus, including the Print Shop, was largely caused by a short essay written by Elbert Hubbard that went “viral.” *A Message to Garcia*, first published in 1899, was Hubbard’s interpretation of a Spanish-American War event and its representation of the American Dream –



ROYCROFTERS

AT-LARGE ASSOCIATION

The Roycroft began as a communal business and crafts colony in East Aurora, NY, in 1895. Founded by Elbert Hubbard, it was one of several utopian societies that formed during the Arts & Crafts Movement (1880-1920) in response to the shoddy, mass-produced goods of the Industrial Age. The Roycroft artisans became well known for their high artistic standards in the creation of furniture, pottery, metal-work, and hand-printed, illuminated, and tooled leather books. Roycroft exemplified the principles of quality, beauty, and the worthwhile life, strengthening the connection between "Head, Heart, and Hand."

Inspired by these Roycroft principles, the Roycroft Renaissance was born in the 1970s and a new community of independent artisans was established. The Roycrofters-at-Large Association (RALA), was formed in 1976. Over 45 years later, this non-profit organization is still actively working to keep alive the history and philosophy of Roycroft through its artisan guild, membership opportunities, special events, and festivals.

Please visit the RALA table this weekend in the Books & More exhibit space on the 10th floor. There are different levels of annual membership open to artists and art enthusiasts alike. More information can be found on our website at www.ralaweb.com.



THE ARTISANS

Only artisans whose work exemplifies the following criteria are awarded the use of the RR mark through annual jury by Roycroft Master Artisans:

- High quality hand-craftsmanship
- Excellence in design
- Continuing artistic growth
- Originality of expression
- Professional recognition

After five years, if the work is shown to be exceptional, the jury may elevate the artist to Master Artisan status.



THE GOODIE BOX AT GROVE PARK INN

OVER 20 ROYCROFT RENAISSANCE ARTISANS COLLABORATE AND CONTRIBUTE EVERY YEAR FOR THE RALA GOODIE BOX. THIS YEAR, IT'S WORTH OVER \$7,000 FOR ONE LUCKY WINNER ON SUNDAY FEB. 20TH AT 3PM.

Elbert Hubbard created the original "Goodie Box" in the late 1800s, and the Roycrofters At-Large Associate has continued this tradition for over 45 years. Tickets for sale at the RALA Table on the 10th floor at the GPI conference.

1 TICKET - \$5 | 3 TICKETS - \$10 | YOU DO NOT NEED TO BE PRESENT TO WIN

END TABLE AND FRAME BY BRIAN BRACE | GINKGO HARDWARE BY RON VANOSTRAND | ORIGINAL PAINTING BY JULIE LEIDEL

WWW.RALAWEB.COM

EDUCATING, FOSTERING AND INSPIRING THROUGH THE CONTINUAL EVOLUTION OF THE ARTS & CRAFTS MOVEMENT

Lesser Known Furniture Shopmarks of the Arts & Crafts Movement

by Kate Nixon

Names like Gustav Stickley, Greene & Greene, and Charles Limbert are well known to collectors of nearly all experience levels. But what about the shopmarks of the rare and random that could make even experienced collectors reach for their reference books? Below are a few of the many lesser known furniture shopmarks along with the brief story of how they came to be.

Byrdcliffe

Wanting to build a self-sustaining artist colony, Ralph Radcliffe Whitehead and his wife Jane Byrd McCallm soon found a 1500 acre site at the foot of Mount Guardian in New York's



Catskills Mountains which gave them the opportunity to realize their utopian dream in 1902. The Byrdcliffe Arts & Crafts Colony included cottages, a space for pottery, an art studio, a library, and a dairy. As the colony started to fill with artists and craftspeople, the style of works created from Byrdcliffe were indeed of the Arts & Crafts influence. Furniture was made of walnut or cherry, woods native to the area. One of the first residents of the colony, craftswoman Zulma Steele (1881-1979), designed a number of chairs, drawings and a line of ceramic works (known as "Zedware") now seen in museums. The shopmark itself features a flower in the middle of an octagon with the words "Byrdcliffe" and "1904" located in a larger octagon.

Karpen Brothers

Also known as S. Karpen and Bros, this Chicago-based furniture company founded in 1880 by immigrant and Prussian-born Solomon Karpen, made cabinet furniture, desks, folding beds, bridal sofa lounges, chairs, sofas, settles and parlor furniture in the Arts & Crafts style. All nine Karpen brothers eventually joined the business and employed many immigrants who were additionally craftsmen. The Karpen family created clubs, social functions, newsletters and provided financial support to their employees. There are variations of these shopmarks, one with a metallic tag representing both Chicago and New York locations.



Shopmarks on Karpen Brothers Furniture and the shopmark/logo for Come-Packt Furniture.

Come-Packt

Among the most affordable furniture of the early 20th century, Come-Packt furniture started in Ann Arbor, Michigan in 1907 as a provider selling directly to the public. Instead of depending on retailers or suppliers, they kept costs down by sending their furniture unassembled to customers who would put them together at home. The furniture came either finished or unfinished, in different types of oak, and the upholstery came in different leather grades and colors. While the styles of furniture were varied, the great majority were of the American Arts and Crafts style. The furniture was advertised in *The Fra*, *The Philistine*, and *The Craftsman* as well as *Home Needlework Magazine*, *McClure's Magazine*, *Popular Mechanics*, and *The Saturday Evening Post* in the hopes that more of the American public would be interested. (Long, p.159) Come-packt's logo is a graphic rendition of their name in black in white.

The Furniture Shop



Arthur and Lucinda Mathews were San Francisco-based artists, designers, writers and decorators. They built furniture that was often incised, handcarved and beautifully decorated. Along with business partner John Zeile, the three

founded The Furniture Shop, which was important in cultivating the "California Decorative Style." The furniture was often customized and is seen by collectors as rare and valuable today. While Arthur and Lucinda incorporated other styles into their furniture, the Arts and Crafts style was incorporated with motifs inspired by local Californian flora. The shopmark is shown as a loosely drawn flower with the words "Furniture Shop" underneath.

Lakeside Craft Shops

Otherwise known as the Woodcraft Guild in its earlier days, the Lakeside Craft Shops in Sheboygan, WI were founded in 1912 by Fred Dennett. The shops specialized in small



home furnishings and novelty items in the Arts & Crafts style with its company motto "Art in the Home." The Lakeside Craft Shops was known to have produced many Arts & Crafts works through 1916. In later years, the Wisconsin shop began to produce cedar chests and phonograph cabinets. The shopmark is a circular paper label with red trim and blue background behind a woodworker.

See the Arts & Crafts Furniture Masterpieces of the Two Red Roses Collection, featured in the Museum of the American Arts & Crafts Movement, in a seminar on Saturday, February 17th at 10:00 AM!

C.F. Streight Manufacturing

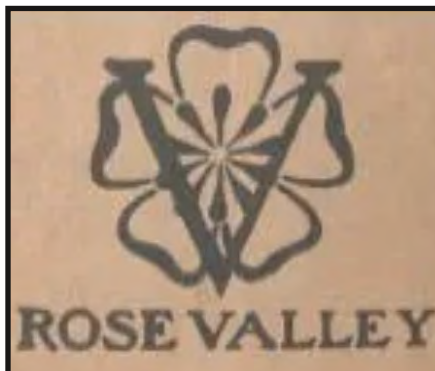
Known for the "Slumber Chair," C.F. Streight Manufacturing of Cincinnati, OH made Morris chairs and Davenport sofa beds. Straight also manufactured a Slumber Davenport with a fold down back that converted into a bed. The Streight company additionally made a shallow theater chair with a flip-up upholstered seat. The paper label or shopmark featured their comfortable Morris chair.



Wolverine Manufacturing Company



Started in Detroit, MI by founder Frederick Smith in 1887, Wolverine Manufacturing specialized in parlor and library pedestal tables out of golden oak in the Arts & Crafts style. The shopmark is a colorful circular decal with yellow background, a red table and green trim.



Rose Valley Association

Founder Will Price formed a utopian artist colony in Rose Valley, Pennsylvania, active from 1901-1907, where craftspeople would live, create,

(Continued next page)

and sell their works in nearby Philadelphia. Within a year, furniture was hand crafted by a small group of craftsmen in the colony's furniture shop. Arts & Crafts style concepts like mortise and tenon construction, double dovetail joints, and other methods were utilized in the colony's furniture. The Arts and Crafts furniture produced there was limited, heavy and well-constructed. Collectors today find the furniture extremely rare and valuable. The shopmark is a branded "V" over a flower.



Royal Easy Chairs Co.

The mechanics of the Morris chair remained basically unchanged until the Royal Chair Company of Sturgis, MI, began marketing reclining chairs that were operated by push button. Founded by Jerrold Walton, who was also the chief designer, this prolific firm was active from 1899 until 1928, producing rockers and reclining chairs in a variety of popular styles, including Arts and Crafts. The styles of the chairs made included Mission, Turkish, Golden Oak, and Colonial Revival. The shopmarks are either a decal, paper label or metal tag.



See the largest collection of Arts & Crafts shopmarks online at ArtsandCraftsCollector.com by scanning the QR code or visit: ArtsandCraftsCollector.com/resources/know-your-shopmarks

Want to learn more on how to recognize fakes, forgeries and repairs in your Arts & Crafts furniture? Make sure you don't miss our Small Group Discussion with N. Gordon Gray on Friday, February 16th at 11:00 AM.

Shop of the Crafters

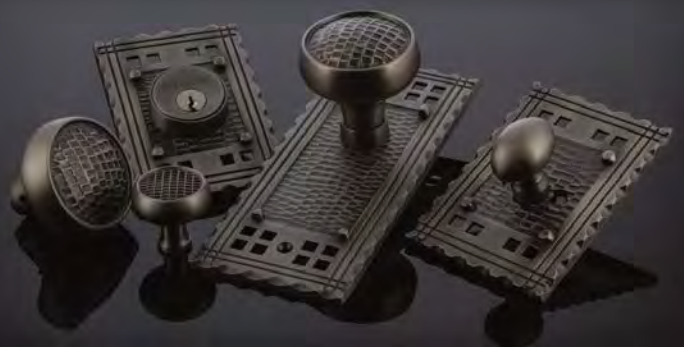


Cincinnati is well known for its many pottery firms and contributions to the genre of American Art Pottery. In the genre of Arts and Crafts furniture, the largely unknown Shop of the Crafters furniture company came back into the spotlight with the re-publication of the 1906 Shop of the

Crafters catalog. Founded by Oscar Onken in 1904, the Mission furniture that was sold included novelties like "Hall Clocks, Shaving Stands, Cellarettes, Smokers' Cabinets and Mission Chairs." The furniture was uniquely created with a British Arts and Crafts influence. The shopmark came in either a paper label or was branded on. The logo of a lit lantern in the middle was shown amidst the words "Shop of the Crafters" and "At Cincinnati Oscar Onken Co Sole Owners."

CRAFTSMAN SUITE

Door Knobs, Plates, Deadbolts & Cabinet Knobs



NOSTALGIC
WAREHOUSE

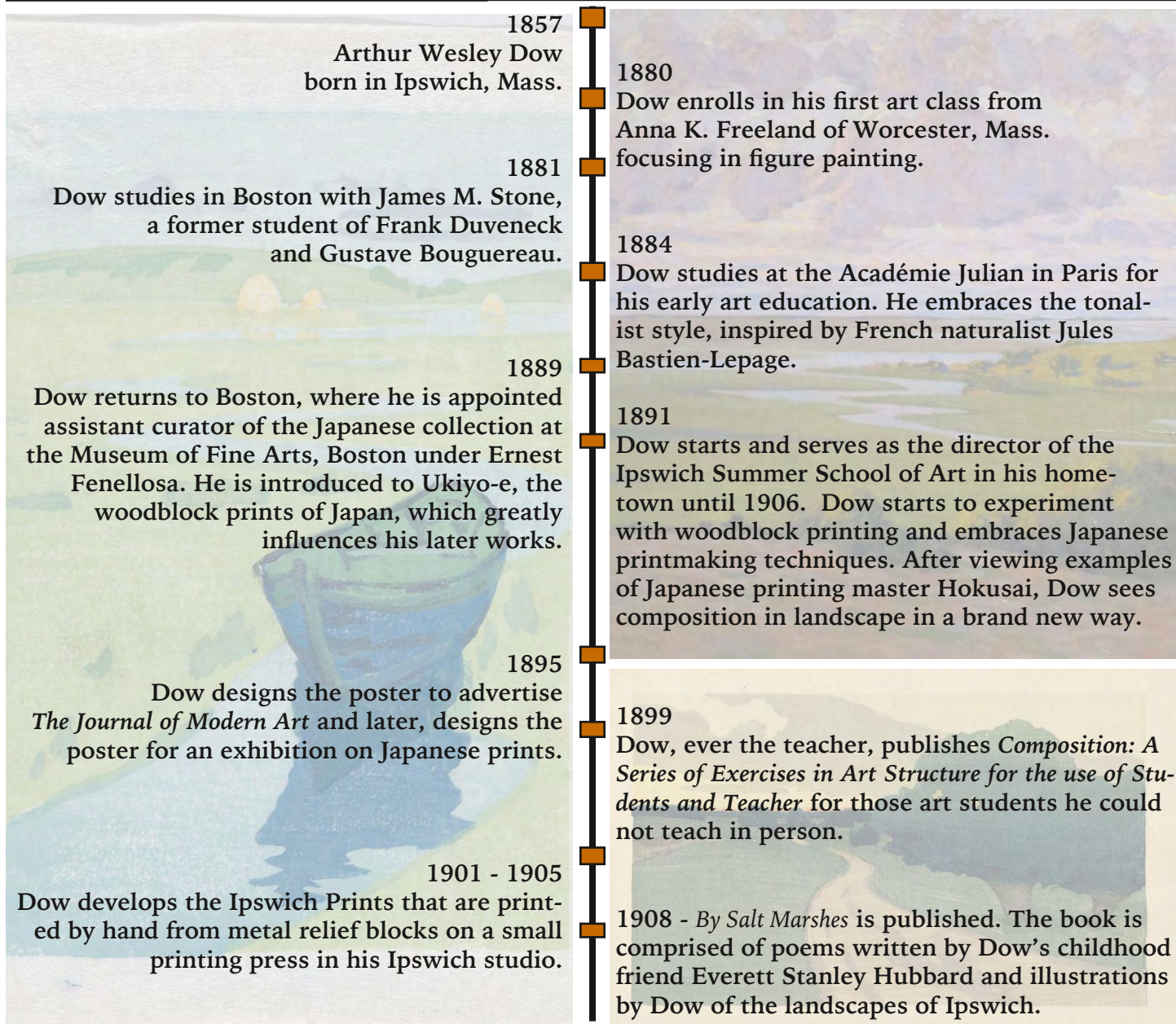
www.NostalgicWarehouse.com



The Life of Dow:

A Brief Timeline of Arthur Wesley Dow's Life

by Kate Nixon



Dow dies on December 13, 1922, in his home in New York City and is brought back to the Old North Burying Ground in Ipswich, Massachusetts for his final resting place.

Dow's students included many of America's leading artists and craftspeople, including: Georgia O'Keeffe, Max Weber, Shirley Williamson, Charles Sheeler, Charles J. Martin, two of the Overbeck Sisters, Delle Miller, Isabelle Percy West, Walter King Stone and others. One student, printmaker Pedro Joseph de Lemos, adapted and widely disseminated Dow's theories in dozens of theoretical and instructional publications for art schools. Dow also influenced artists at the Byrdcliffe Colony and the Californian Arts & Crafts school of Cathedral Oaks.

Shown from left to right: "The Derelict" or "The Lost Boat", (upper right) "Lavender and Green," and (lower right) "The Long Road – Argilla Road, Ipswich". All art shown are under Universal Public Domain. Original works can be seen at the Metropolitan Museum of Art and Dayton Art Institute.

Social Media and Discussion Groups for Arts & Crafts Collectors

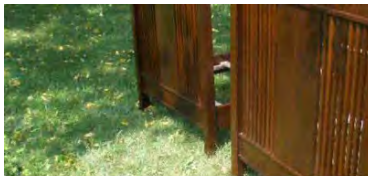
Facebook groups

"Collecting Gustav Stickley & the Designs of the Arts & Crafts Movement"



Collecting Gustav Stickley & the designs of the Arts and Crafts Movement

- "Arts & Crafts Collector"
- "Revival of the Arts and Crafts Movement"
- "The Prairie School Traveler"
- "Arts & Crafts Era Metal"
- "Fans of Arts & Crafts, Mission and Prairie Style Furniture Group"
- "In the Arts & Crafts Style"



Fans of Arts & Craft, Mission and Prairie Style Furniture Group

- "American Arts and Crafts"
- "American Bungalow"
- "Stickley, Limbert, Roycroft, Mission Oak Identification and Discussion Group"

Quora

Quora is a discussion thread based community that has writing prompts you can help answer. The following are current active discussions on Quora.

- "When did the Arts and Crafts Movement end?"
- "What are some of the reasons why people consider the Arts and Crafts movement as one of the most important movements in modernism?"
- "Why was the "Arts and Crafts" movement so influential?"
- "What are the characteristics of the Arts & Crafts movement?"
- "Have you ever been influenced by the Arts and Crafts Movement in your creativity?"
- "What would the 21st Century equivalent of Arts & Crafts architecture involve?"



"Start the Presses: Restoring the Roycroft Print Shop"

(Continued from p. 60)



RCC's focus is now on enhancing the guest experience in the interior. Thanks to a grant from Erie County, restoration work is currently taking place in the top two floors of the tower to house specialty rotating exhibits. And the Jerry and Barbara Castiglia Art Center has completed its first full year in operation, allowing for a record number of art classes to be offered at the Campus.

Perhaps the project the RCC is most excited about is that the presses are once again in operation in the historic Print Shop. We are pleased to announce that *A Message to Garcia* is being printed on the Roycroft Campus for the first time since 1938. For the RCC staff, volunteers, and board members, this project has truly embodied the "Head, Heart, Hand" philosophy. Like Hubbard and the early Roycrofters, we have experimented with different types of paper, ink, and binding methods to produce a work fitting the cultural significance of *A Message to Garcia*, including a limited edition of one-of-a-kind, handmade bindings by Roycroft Renaissance artisan, Diane Bond. The first run from the Campus in 86 years is set for release in March 2024, its 125th anniversary, and we invite you all to join us in our celebration as we continue to "Carry the Message to Garcia."

Roycroft Campus at (716) 655-0261 or
info@roycroftcampuscorp.com

Educational Displays

Peters and Reed Pottery



Carrigan's collection. This collection was featured in the publication *Sanford's Guide to Peters & Reed*, the guide dedicated to documenting the South Zanesville line of art pottery.

American Art Pottery fans can find the display dedicated to Peters and Reed Pottery next to the 8th Floor Vanderbilt wing elevator.

A Message to Garcia



printed millions of times over, but there have been two movies based on the famous book. It has been associated with the Boy Scouts of America and has even been a topic of conversation on Mike Rowe's podcast.

Drawing from the archives of the Elbert Hubbard Roycroft Museum and the collection of Roycroft expert Robert Rust, versions of historical significance are displayed together with previously unknown and unseen examples of Hubbard's classic publication. The *Message to Garcia* case and others are presented during the National Arts and Crafts Shows paid for by the Arts & Crafts Research Fund.

Metal and Enamel Magic: The Works of Gertrude Twichell

by Kate Nixon

On June 14th, 2020 at a Decorative Arts Auction from Treadway Gallery, a remarkable thing happened.

An exciting bidding war started, a thrill that would make online auction spectators pay attention. An auction lot originating from the Robin Greenwald collection, described as a hand-hammered copper box with a decorated enamel top, had the spotlight after attracting 34 bids. The small box ended up selling for a realized price \$21,250.00, effortlessly sailing past the high estimate of just \$500.00. The copper box in question was made by Gertrude S. Twichell, a skilled designer and crafter in her own right, whose works have landed alongside her famous contemporaries and highlighted in museum collections as examples of gorgeous Arts and Crafts Metalwork.

The appeal of Twichell's works could be seen long before auction sales proved the value of her works. In a 2005 New York Times article, writer David Colman interviews a woman whose passion in the decorative arts led her to discover a little hand-hammered and hand-enameled bowl with little flowers and blue enamel at a Connecticut antique fair. For the cost of \$500, Twichell's box inspired the woman to find out and collect the works of other silversmiths. A simple search on liveauctioneers.com for works by Gertrude Twichell shows a work similar to that description, an important and rare signed and stamped sterling and enamel box with "Beautiful patina, fine craftsmanship" and listed in excellent original condition. 18 bids later, the work ended up selling at a Humler & Nolan auction for \$5,250.00.

A signed hammered copper and enamel hinged box decorated in the Pre-Raphaelite style with panels featuring a maiden and deer in a wooded landscape. This was a rare example of her work featuring all enameled panels. This work sold for \$9,000.00, past the high estimate of \$3,500.00 in an auction from Rago Arts and Auction Center. Image from liveauctioneers.com and originated from Rago Arts and Auction Center.

An exact example of the sterling and enamel work resides in The Two Red Roses



A silver and enamel Peacock Brooch with citrine embellishments made by Gertrude S. Twichell was featured in the Boston Museum of Fine Arts exhibit "Boston Made: Arts and Crafts Jewelry and Metalwork." Image: Museum of Fine Arts, Boston.

Collection and presumably would be on display at the upcoming Museum of the American Arts and Crafts Movement. Years ago, the work also caught the eye of author and late jewelry authority Rosalie Berberian as an example of the naturistic design so prevalent through the reform movement.

In a contribution to the March 2016 e-newsletter from The Two Red Roses Foundation describing the works of Twichell, Berberian described the same design of the blue and silver floral bouquet box as "a stylized arrangement of leaves with realistic blossoms in its center, set against a vibrant, deep blue background." Berberian included another example of Twichell's work in her description, "Here, Twichell created works glorifying nature through depictions of colorful flowers and foliage...The floral elements of the main design are rendered in a naturalistic fashion, including veining in the leaves and light lines against a dark background that serve to define and separate petals, leaves, and individual

berries. The cover edges of both boxes are notched, creating rims that suggest the tips of flower petals, in keeping with the overall aesthetic of the designs.”

A silver and enamel Peacock Brooch with citrine embellishments made by Gertrude S. Twichell was featured in the Boston Museum of Fine Arts exhibit “Boston Made: Arts and Crafts Jewelry and Metalwork.” Image: Museum of Fine Arts, Boston.

In an exhibit from the Museum of Fine Arts in Boston entitled “Boston Made: Arts and Crafts Jewelry and Metalwork,” a gorgeous example of Twichell’s mastery was shown in a showcase of nine women artists, including Twichell alongside her fellow Boston metalworker Elizabeth Copeland in addition to Josephine Hartwell Shaw and Margaret Rogers. An Enamel and Citrine Peacock Brooch made several favorites lists of exhibit attendees and it is no wonder that this bright and colorful example of metalwork comes straight from The Paul & Terry Somerson Collection of Twentieth and Twenty-First Century Metalwork and Jewelry.

While not much is known about her life, it is known that Gertrude S. Twichell was a graduate of the Rhode Island School of Design, was a master craftsman in The Society of Arts & Crafts, Boston, and exhibited with several craft guilds in America. In addition to creating works that would even find their

way to the Paris International Exposition in 1937, Twichell was a writer and contributed articles to the Industrial Arts and Handicrafter publications.



An important and rare sterling and enamel Arts and Crafts circular box by Twichell with a fine hand hammered surface. The cover in flower blossom form is centered with a colorful floral bouquet in enamel and foil. The box interior is coated with nice turquoise enameling. Image from liveauctioneers.com and originated from Humler & Nolan.

Why Risk It?



**Let the UPS Store
ship your
purchases home.**

**Talk to them in
the Antiques
Show in the back
of the Ballroom.**

To Those We've Lost

James D. McCord, AIA

Californian Architect and Arts & Crafts conference supporter James McCord passed away in November of 2023. Longtime conference attendees will remember Jim as a co-host with Gary Haynes for our small group discussion "Problems - and Solutions - in Restoring Your Old House."

McCord's specialties were in the rapidly important field of historic preservation. More than a decade ago, one of his greatest successes was the restoration of the Del Monte Hotel Roman Plunge Complex of 1917 (pictured below). His resulting solarium and pool earned McCord the California Preservation Foundation Restoration Award in 2012.

His experience as an architect for more than 45 years made him a valued member of the Arts and Crafts collecting community and his influence in this field.

"Jim McCord was an early and faithful supporter of the Arts and Crafts Conference at the Grove Park Inn. Nearly every year he volunteered to share his experience as an architect with a room full of Arts and Crafts enthusiasts anxious to learn more about the relationship between the architect and the client when designing and building a home," said National Arts and Crafts Conference founder Bruce Johnson. "While Jim will be missed by everyone who knew him, his influence will be felt for years to come."



Historic Preservationist and Architect James McCord in front of his house with his dog. Photo courtesy of Spring Nichols.

Marilyn Johnson



Marilyn Johnson, Winterthur Alumna, Curator, and Educator passed away November 3rd, 2022 at the age of 88. She had her master's degree in early American Culture from the Winterthur Museum and the University of Delaware. She was awarded a Chester Dale Fellowship in the American Wing at the Metropolitan Museum of Art before joining the staff there and wrote the furniture entries for the catalog for the exhibition "19th Century America." Johnson's first publication was a 1968 article for the Winterthur Portfolio "John Hewitt: Cabinetmaker" based on her Winterthur thesis. She continued to publish articles in *House & Garden*, *Apollo*, *Nineteenth Century* and *The Magazine Antiques*.

Johnson advocated for American Arts and Crafts design and she acquired important works from Gustav Stickley's home in Parsippany-Troy Hills. She additionally curated "Louis Comfort Tiffany: Artist for the Ages," for Exhibitions International and traveled to several museums across the country. Johnson also wrote the catalog for the Tiffany exhibition.

According to an article in remembrance in the publication *The Antiques and The Arts*, "Marillynn Johnson was both a mentor and a role model. She possessed a remarkable eye for quality and design, pioneered new avenues of collecting, and was a gifted writer. As both a curator and teacher, she was much admired by many in the field of American decorative arts."

American Art Pottery Association To Hold Convention in the Motor City



An attendee admiring the art pottery on display during the 2017 AAPA Convention in Philadelphia. (Photo: AAPA.)

The American Art Pottery Association will make its way in the spring season to the Motor City to present its annual conference and shows.

On the AAPA's website, AAPA.info, registration is open to attend the yearly travelling event. For the first time, the convention will travel to the city of Detroit, Michigan and attendees will stay at the elegant Kingsley hotel on Woodward Avenue, steps from the Cranbrook Educational Community and Museums.

The Detroit conference will include for its attendees a tour of the Detroit Institute of Arts, a trip to view Cranbrook's collections and architectural treasures, and a trip to the beloved Pewabic Pottery's studios and museum.

This annual show and conference, dedicated exclusively to American art pottery, marks an opportunity for people and members of the AAPA to enjoy and purchase from the world of art pottery. Pottery enthusiasts can often learn about their favorite and unknown pottery firms with each issue of *The Journal of the American Art Pottery Association*. The AAPA's quarterly publication is filled with gorgeous color photographs of pottery and pottery marks, along with exclusive, in-depth articles on potters and operations from all over the country, information on collecting, buying, and selling pottery, and reviews of books, auctions, events, and more.

"Anyone who owns even a single piece of art pottery will benefit by being a member of the AAPA and by learning more about art pottery from the fabulous articles and color photographs in each issue of the *Journal*," National Arts and Crafts Conference founder and advisor Bruce Johnson has declared. "Show your support for this volunteer organization by becoming a member this weekend."

Conference Director Kate Nixon says *The Journal* alone is reason enough for giving your support. "Any collector knows that print publications can be hard to come by these days. Not only is *The Journal* they still going, but the publication itself is consistently professionally done. The photographs in *The Journal* are simply stunning. Combine that with articles from the experts in the field? Honestly any collector or Art pottery fan should have this magazine for their library or their front table."

AAPA at the National Arts and Crafts Conference

The American Art Pottery Association has for decades been an active participant at the National Arts and Crafts Conference at the Grove Park Inn. Each year volunteers bring from their private collections stunning examples of the best American art pottery for our enjoyment and education. Their display case is always a main attraction before and after the shows and seminars. This year, the display case will focus on the works of Peters and Reed pottery featuring the collection of Linda Brouwer Carrigan.

AAPA members Christine Boone and Patti Bourgeois will return for their Friday morning discussion session with art pottery collectors of all experience levels and will give advice for collectors during their session "Collecting Art Pottery 101."

Don't forget to catch the opening night seminar in the Heritage Ballroom at 8:10 PM "Hist-Ohr-y: The Last Chapter of George Ohr and A New Beginning" by ceramics expert David Rago and Everson Museum of Art curator Garth Johnson will present "The Butterfly Effect: Adelaide Alsop Robineau's Empowering Effects on the World of Ceramics and Beyond"

For more information about American Art Pottery Association and how to sign up to receive the latest issue of *The Journal of the American Art Pottery Association*, please stop by their information table near the 8th floor ticket booth.

Find the AAPA online at aapa.info.

Dining at the Grove Park Inn Resort

Advance dining reservations are recommended for dinner, but not for lunch.

Continental Breakfast Saturday and Sunday is included in the Weekend Package for those attendees registered for a room at the GPI.

Tel. (828) 252-2711

Thursday

Breakfast:

Blue Ridge Dining Room
Morning Table buffet
(\$30.00)
7:00am - 10:30am

Marketplace
(Coffee, pastries, sandwiches)
6:30am - 11:00am

Lunch:

Edison
(Craft Beer & American Cuisine)
11:00am - 3:00pm

Marketplace
(Coffee, sandwiches, salads, soup)
11:00am - 10:00pm

Spa Cafe
(Wraps, Sandwiches & Salads)
11:00am - 5:00pm

Great Hall Bar
(Full bar, appetizers & lighter fare)
11:00am - 11:00pm

Dinner:

Edison
(Craft Beer & American Cuisine)
4:00pm - 10:00pm

President's Lounge
(Small Plates & Appetizers)
4:00pm - 10:00pm

Vue 1913
(American Brasserie)
5:00pm - 10:00pm

Great Hall Bar
(Full bar, appetizers & lighter fare)
11:00am - 11:00pm

Friday

Breakfast:

Blue Ridge Dining Room
Morning Table buffet
(\$30.00)
7:00am - 10:30am

Marketplace
(Coffee, pastries, sandwiches)
6:30am - 11:00am

Lunch:

Edison
(Craft Beer & American Cuisine)
11:00am - 3:00pm

Marketplace
(Coffee, sandwiches, salads, soup)
11:00am - 10:00pm

Spa Cafe
(Wraps, Sandwiches & Salads)
11:00am - 5:00pm

Great Hall Bar
(Full bar, appetizers & lighter fare)
11:00am - 11:00pm

Dinner:

Edison
(Craft Beer & American Cuisine)
4:00pm - 10:00pm

President's Lounge
(Small Plates & Appetizers)
4:00pm - 10:00pm

Vue 1913
(American Brasserie)
5:00pm - 10:00pm

Great Hall Bar
(Full bar, appetizers & lighter fare)
11:00am - 10:00pm

Blue Ridge Dining Room
Seafood Buffet: \$60 + tax
5:00pm - 9:00pm

Dress code for all restaurants is resort casual. No jacket or tie required.

Saturday

Breakfast:

Conference Continental. Presidents Lounge * *
6:30am - 9:30am

Blue Ridge Dining Room
Morning Table buffet
(\$30.00)
7:00am - 10:30am

Marketplace
(Coffee, pastries, sandwiches)
6:30am - 11:00am

Lunch:

Edison
(Craft Beer & American Cuisine)
11:00am - 3:00pm

Marketplace
(Coffee, sandwiches, salads, soup)
11:00am - 10:00pm

Spa Cafe
(Wraps, Sandwiches & Salads)
11:00am - 5:00pm

Great Hall Bar
(Full bar, appetizers & lighter fare)
11:00am - 10:00pm

Dinner:

Edison
(Craft Beer & American Cuisine)
4:00pm - 11:00pm

President's Lounge
(Small Plates & Appetizers)
4:00pm - 10:00pm

Vue 1913
(American Brasserie)
5:00pm - 10:00pm

Great Hall Bar
(Full bar, appetizers & lighter fare)
11:00am - 10:00pm

Blue Ridge Dining Room
Prime Rib Buffet: \$60 + tax
5:00pm - 9:00pm

Menus available online at GroveParkInn.com

Sunday

Breakfast:

Conference Continental. Presidents Lounge * *
6:30am - 9:30am

Blue Ridge Dining Room
Morning Table buffet
\$30.00
7:00am - 10:30am

Marketplace
(Coffee, pastries, sandwiches)
6:30am - 11:00am

Lunch:

Blue Ridge Dining Room
Champagne Brunch: \$52.00
12:00pm - 2:30pm

Edison
(Craft Beer & American Cuisine)
11:00am - 3:00pm

Marketplace
(Coffee, pastries, sandwiches)
11:00am - 10:00pm

Spa Cafe
(Wraps, Sandwiches & Salads)
11:00am - 5:00pm

Great Hall Bar
(Full bar, appetizers & lighter fare)
11:00am - 11:00pm

Dinner:

Edison
(Craft Beer & American Cuisine)
4:00pm - 11:00pm

President's Lounge
(Small Plates & Appetizers)
4:00pm - 10:00pm

Vue 1913
(American Brasserie)
5:00pm - 10:00pm

Schedule still subject to minor changes.

*** * Included in the GPI A&C Weekend Package; show room key; served outside Heritage Ballroom prior to seminars.**

Hands-On Workshops

In keeping with the Arts & Crafts philosophy of “Head, Heart and Hand”, each year we offer individuals who are planning to arrive early to the National Arts & Crafts Conference the opportunity to take a pre-conference hands on workshop, giving you the chance to make something for you or your home.

Our Pre-Conference Workshops required advance registration in order for instructors to prepare special materials for each student. **Inquiries for late cancellations should be made at the Arts & Crafts Registration Desk.** Please dress appropriately and arrive early.

White Line Printmaking with Gay Bryant

Laurel F/G (Sammons Wing)
Part 1: Thursday 2:00pm - 5:00pm
Part 2: Friday 8:00am - 11:00am

Creating a Cylinder Vase with Ron VanOstrand

Dogwood Room (Sammons Wing)
Part 1: Thursday 2:00pm - 5:00pm
Part 2: Friday 8:00am - 11:00am

Coppersmithing: Arts & Crafts Style with Frank Glapa

Wilson Room P (Vanderbilt Wing)
Part 1: Thursday 2:00pm - 5:00pm
Part 2: Friday 8:00am - 11:00am

Arts & Crafts Embroidery with Natalie Richards

Laurel H/J (Sammons Wing)
Part 1: Thursday 2:00pm - 5:00pm
Part 2: Friday 8:00am - 11:00am



RED SHOE MOVERS & MORE

WHITE
GLOVE

JOSEPH POTTER

redshoeforyou@gmail.com

www.redshoemovers.com

@redshoemovers

Local Moves

Art Installation

Furniture Delivery
(local and long distance)

828.242.2626

NCUC C-2908

Find us in the Antiques Show

Antiques Exhibitors

Antique Articles
Sandie Fowler
PO Box 72
Dunstable, MA 01827
(978) 877-7093
artiles@earthlink.net
Rubylane.com/shop/AntiqueArticles

Arts & Crafts Period Textiles & Books
Dianne Ayres
Tim Hansen
5427 Telegraph Avenue
#W2
Oakland, CA 94609
(510) 654-1645
(510) 316-3528 (cell)
acptextile@aol.com
textilestudio.com

Barbara Gerr Antiques
Arnie Small
Barbara Gerr
504 E. Bergen Court
Galloway, NJ 08205
(609) 407-9997
(609) 432-1231
potsinacnj@aol.com
barbaragerrantiques.com

California Historical Design
AC Stickley
Gus Bostrom
1901 Broadway
Alameda, CA 94501
(510) 647-3621
gus@acstickley.com
acstickley.com

Carol Eppel Antiques
Carol Eppel
10291 119th Street North
Stillwater, MN 55082
(612) 210-1611
(651) 430-0095
caeppe@msn.com
caroleppelantiques.com

Christine L. Boone Antiques
Christine L. Boone
10182 Susan Court
Roscoe, IL 61073-9309
(815) 623-6031
(815) 979-9588
christine.boone@charter.net
ebay.com/str/nescia51

Clements Antiques
Todd & Michele Clements
P.O. Box 129
Sanbornton, NH 03269
(603) 387-5329
(603) 286-9485
lastminute713@metrocast.net
clementsantiquesnh.com

Clinker Press & Friends
Andre and Ann Chaves
0921 SW Palatine Hill Rd.
Tualatin, OR 97062
(818) 422-2278
(626) 818-3150
clinkerpress@gmail.com
clinkerpress.com

Coleridge Trading
Larry Cheek
6400 NC Hwy 22-42 South
Ramseur, NC 27316
(336) 465-0681
7ofus@rtmc.net

Diverse Ayres Fine Art
Marc Williams
W7521 Castle Heights Dr.
Holmen, WI 54636
(801) 440-6786
msw60223@gmail.com
diverseayres.com

Dreamlight Antiques
John Connelly
1140 S. Third St.
Louisville, KY 40203
(502) 314-1117
jcdreamlight@gmail.com

Drucker Antiques
William Drucker
487 East Main St. Suite 197
Mount Kisco, NY 10546
(914) 419-2295
druckerantiques.com
bill@druckerantiques.com

Eastwood Gallery
Cameron Quintal
Brian Smith
1818 Selby Ave.
St. Paul, MN 55104
(651) 695-1902
info@eastwoodgallery.com
eastwoodgallery.com

Edwardia
Denise Burns
6342 N. Sheridan Rd.
Chicago, IL 60660
(773) 366-6137
edwardia3@gmail.com

Emerson & Terri Manning
1316 Knox Street
Statesville, NC 28677
(704) 425-6274
emersonmanning@gmail.com

George Sorensen Antiques
George Sorensen
13511 Yalta St. NE
Ham Lake, MN 55304
(763) 360-3600
george@sorensengallery.com
sorensengallery.com

Hammered & Hewn
Bryan Mead
2116 Layton St.
Pasadena, CA 91104
(818) 749-0021
bryan@hammeredhewn.com
hammeredhewn.com

Harris Antiques
Mark & Sherrie Harris
51201 County Rd. 15
Elkhart, IN 46514
(574) 320-5528

Jack Pap Antiques
Redinger Antiques
Jack Papadinis
Karen Redinger
P.O. Box 322
W. Simsbury, CT 06092
(860) 658-4374
(860) 558-1508 (cell)
jackpap.com/ jackpapant.com
jackpap@comcast.net

Jim and Ellen Tyne Antiques
Jim and Ellen Tyne
312 E. Fairview Dr.
DeKalb, IL 60115
(815) 793-6672 (Ellen)
(815) 758-7829 (Jim)

JMW Gallery
Jim Messineo
Mike Witt
358 Broadway
Cambridge, MA 02139
(617) 338-9097
(617) 803-5435
mail@jmwgallery.com
jmwgallery.com

Joe & Tina Tunnell
104 Amhurst Lane
Bristol, TN 37620
(423) 534-8220
josephatunnell@gmail.com

JustArtPottery.com
Greg and Lana Myroth
1184 Rentsch Dr.
East Peoria, IL 61611
(309) 690-7966
(309) 256-4548
greg@justartpottery.com
JustArtPottery.com

Kindred Styles Antiques
Gene & Jody Zwiefel
1906 7th Avenue
Rock Island, IL 61201
(309) 236-4287
kindredstylesantiques@gmail.com
kindredstylesantiques.com

Antiques Exhibitors

McCreary Auction
Greg McCreary
335 Bailey Rd.
Crystal City, MO 63019
(314) 608-5770
mccreary_todd@yahoo.com

Michael Hingston Antiques
Michael Hingston
34 Mayflower Drive
Manchester, NH 03104
(603) 627-4720
(603) 496-2584
mike@mhingston.com
mhingston.com

Nancy Hunt Antiques
Nancy & Raymond Hunt
1448 Genito Road
Manakin-Sabot, VA 23103
(804) 647-3155
(804) 396-5578
stschnzer@aol.com

Oberkirsch Designs
Mark & Jean Oberkirsch
1045 Parkridge Road
Hillsboro, MO 63050
(636) 797-5144
(314) 609-3334
oberarts@oberarts.com

Pats Pots
Japanese Woodblock
Print Gallery
Patti Bourgeois
P.O. Box 1226
Westport, MA 02790
(508) 679-5910
(774) 664-0195
patspots1997@charter.net
jwpgallery@charter.net
Patspots.com
japanesewoodblockprints.
gallery

Robert Kaplan Collection
Robert Kaplan
9 Lewis Drive
Maplewood, NJ 07040
917-576-2819
info@robertkaplancollection.com
robertkaplancollection.com

Red Shoes Movers & More
Joseph Potter
12 Belleair Road
Asheville, NC 28806
(828) 242-2626
redshoeforyou@gmail.com

Ryan Berley Applied Arts
Ryan Berley
111 Owen Ave.
Lansdowne, PA 19050
(215) 850-3176
ryan@franklinfountain.com
ryanberley.com

Seaside Mission
Larry Delehanty
26 Winsor Ave.
North Kingstown, RI 02852
(401) 269-1545
lawdel67@aol.com

Stickley Copper
Ron Ciarmello
363 E. Lincoln Hwy
Exton, PA 19341
(610) 662-0147 (c)
(610) 640-4653 (o)
rciarmello@gmail.com
stickleycopper.com

Treadway Gallery
Don Treadway
Drew Treadway
2029 Madison Road
Cincinnati, OH 45208
(513) 321-6742
info@treadwaygallery.com
treadwaygallery.com

The UPS Store
825C Merrimon Ave.
Asheville, NC 28804
(828) 252-6930

Uncommon Artifacts
Estate Services LLC
Tommy McPherson
48005 Auburn Dr.
Mobile, AL 36618
(251) 635-2927
(251) 404-8313
tommymcp@comcast.net

Show Etiquette

Keep children under control at all times.

No photography without the exhibitor's permission.

Do not open any closed showcases.

Do not sit in any chairs without asking the exhibitors.

Do not bring any drinks or food into a booth.

Do not set any purse, briefcase, backpack, etc. on an exhibitor's furniture.

Do not bring any personal pieces into the show for identification. Receipts for purchased items are checked by our staff and security as customers leave the shows. If you want to bring examples, we recommend bringing pictures instead rather than actual items that could be taken from you.

Do not pick up any piece for sale without permission. These are fragile antiques and valued for their quality. Always let the exhibitor take the lead.

An exhibitor may be your friend, but their booth is their place of business. Do not take their time away from their clients.

If there is an issue during the show hours, please calmly consult one of our experienced show managers for any problems. The manager's booth is located at the entrance of the Antiques show.

Please thank our staff and show managers for doing what they do. Nearly every member of the staff returns every year to help run the shows smoothly and thoughtfully. They take care of everyone who comes through that door.

Contemporary Craftsfirms

Amy Brandenburg Studio
Amy Brandenburg
3 Iris Street
Asheville, NC 28803
(828) 348-0844
(240) 688-9997
amybrandenburg@gmail.com
amybrandenburg.com

Anderson Art Metal
Jebb & Michelle Anderson
Eastwood Gallery
1818 Selby Ave.
St. Paul, MN 55104
(651) 695-1902
info@eastwoodgallery.com
eastwoodgallery.com

Archive Edition, Inc.
Paul Freeman
720 W 31st St.
San Pedro, CA 90731
(310) 227-6338
(310) 676-2424
textileguy@aol.com

Arts & Crafts Press
Yoshiko Yamamoto
Bruce Smith
USA Mailing Address:
500 Westover Dr. #90276
Sanford, NC 27330-8941
(844) 900-3201

Home studio address:
Yamanouchi 1313-3
Kamakura Kanagawa
247-0062 JAPAN
info@artsandcraftspress.com
artsandcraftspress.com

Art Jewelry by Ilene
Ilene Kay
411 Redfield Drive
Clyde, NC
(469) 353-1222
ilene.kay.jewelry@gmail.com
art-jewelry-by-ilene.com

Brian Brace Fine
Furniture
Brian Brace
1196 Old US Hwy 70 West
Black Mountain, NC 28711
(828) 777-8184
info@brianbracefinefurniture.com
brianbracefinefurniture.com

The Bungalow Craft
Julie Leidel
6582 Annapurna Drive
Evergreen, CO 80439
(303) 263-8577
julie.leidel@gmail.com
thebungalowcraft.com

Bungalow Woodshop
Tim Livingston
1076 Princeton Walk NE
Marietta, GA 30068
(713) 855-5844
tim@bungalow-woodshop.com
bungalow-woodshop.com

Calmwater Designs
Stephanie Young
115 Main Street
Plaistow, NH 03865
(857) 928-9950
stephanie@calmwaterdesigns.com
calmwaterdesigns.com

Clark House Pottery, LLC
Bill & Pam Clark
22 Greenwood Ave.
Greenville, SC 29615
(864) 423-0700
(864) 607-5618
chpllc42@gmail.com
facebook.com/Clark-House-Pottery-113007728749752/

Dard Hunter Studios
Dard Hunter
125 W. Water Street
Chillicothe, OH 45601
(740) 779-3300
dard@horizonview.net
dardhunter.com

Door Pottery
Scott Draves
162 Jackson Street
Madison, WI 53704
(608) 516-9132
sales@doorpottery.com
doorpottery.com

Eric Olson Pottery
Eric Olson
P.O. Box 2701
Fort Pierce, FL 34954
(772) 321-2898
eric.olson62@gmail.com
ericolsonpottery.com

F M G Design
Frank M. Glapa
2601 W. Farwell Ave.
Chicago, IL 60645
(773) 761-2957
(773) 343-7826
fmglapa@earthlink.net
fmgdesigns.com

Fran Moore Woodcarving
Fran Moore
342 Doubletop Lane
Candler, NC 28715
(828) 279-8380
franmoore1@outlook.com
franmoorewoodcarving.com

Gallenberg Studio
Thomas Gallenberg
315 Watson St.
Antigo, WI 54409
(715) 853-7241
tomgallenberg@aol.com
gallenbergstudio.com

Hog Hill Pottery
John & Scottie Post
3960 Burts Road
Vale, NC 28168
(704) 462-2744
(704) 530-0572
hoghillpottery@bellsouth.net
hoghillpottery.com

Interior Vision in the
Craftsman Style
Karen L. Hovde
P.O. Box 16302
Asheville, NC 28816
(425) 830-4131
karenintvision@gmail.com

Jewelry by Rachelle Davis
Rachelle Davis
P.O. Box 72
Asheville, NC 28802
(260) 403-0491
aurachelle@hotmail.com
rachelledavis.com

Joslyn Fine Metalwork
Steve Joslyn
1455 Oakwood St.
37B Loop Rd
Arden, NC 28704
(828) 676-1322
steve@stevejoslyn.com
stevejoslyn.com

Kelsey Schissel Ceramics
Kelsey Schissel
735C Haywood Rd.
Asheville, NC 28806
(828) 280-4618
(828) 225-4063
kelsey@kelseyschisselceramics.com
kelseyschisselceramics.com

LGG Creative Art
Leslie Green Guilbault
1502 Hetzel St.
Pittsburgh, PA 15212
(315) 750-5022
lggcreativeart@gmail.com
lggcreativeart.com

Mission Guild Studio
Christie Schorf-Miller
James M. Miller
2299 State Highway 205
Mount Vision, NY 13810
(607) 433-2373
(607) 287-5449 (cell)
missionguild@stny.rr.com
missionguild.com

Motawi Tile
Nawal Motawi
170 Enterprise Dr.
Ann Arbor, MI 48103
(734) 213-0017
design@motawi.com
motawi.com

Noel Yovovich
344 Depot Suite 101
Asheville NC 28801
(847) 493-1361
noelyovo@gmail.com
noelyovovich.com

Odd Inq
Jonathan White
166 Ocean House Rd.
Cape Elizabeth, ME 04107
(207) 767-3835
jwhite01@maine.rr.com
oddinq.com

Paint By Threads
Natalie Richards
3636 Hemlock Drive.
San Bernardino, CA 92404
(951) 545-7451
natalie@paint-by-threads.com
paint-by-threads.com

The Persian Carpet, Inc.
Douglas & Nelda Lay
 5634 Durham Chapel
 Hill Blvd
 Durham, NC 27707
 (919) 489-8362
 (919) 621-3528
 nelddalay@gmail.com
 persiancarpet.com

Ragsdale Home Furnishings
Phil Myer
 935 Iroquois Ave.
 Battle Creek, MI 49015
 (269) 275-8208
 ragsdale335@gmail.com
 ragsdalehomefurnishings.com

Schenschnitte Originals
Sue Mair
 4110 Los Altas Ct.
 Naples, FL 34109
 (716) 480-9901
 (716) 472-2418
 rbsm2000@aol.com
 roycroftpapercuts.com

Shawn Krueger Fine Art
Shawn Krueger
 407 College Ave SE
 Grand Rapids, MI 49503
 (616) 581-9753
 shawnkruegerfineart@
 gmail.com
 shawnkrueger.com

Shearrow Tile & Pottery
Bill Shearrow
 347 19th St. NW
 Canton, OH 44709
 (330) 455-4324
 (330) 806-0332
 bill@shearrowpottery.com
 shearrowpottery.com

Stained Glass Designs
Bill Kuczmanski
 2000 Indian Point Rd.
 Suffolk, VA 23434
 (757) 809-1774
 (716) 954-3295
 kuczmanskiw@gmail.com

Tom Bojanowski Art & Design
Tom Bojanowski
 3374 SW Shorewood Dr.
 Dunnellon, FL 34431
 (716) 652-9353
 tomboj@me.com

VanOstrand Metal Studio
Ron VanOstrand and
Dawn Raczka
 187 Olean St.
 East Aurora, NY 14052
 (716) 515-8995
 roycrofttron@gmail.com www.
 ronvano.com

Roycroft Campus Corp.
 31 South Grove Street
 East Aurora, New York 14052
 (716) 655-0261
 info@roycroftcampuscorp.com
 roycroftcampuscorp.com

The Roycroft Inn
 40 S. Grove St.
 East Aurora, NY 14052
 (716) 652-5852
 (716) 445-7017
 celeste@roycroftinn.com
 roycroftinn.com

Please note that these
 contemporary artists are
 not only located in the 8th
 floor hallway and outside
 the grand ballroom, but
 they are also located
 inside the Coolidge,
 Eisenhower, and Hoover
 rooms located on the
 right hand side of the
 hallway. Enjoy exploring
 the 8th floor!

Please visit Arts-CraftsConference.com
 for a full list of exhibitors for the 2024 Shows!

Books, Magazines & More

American Art Pottery Assoc.
Journal of the American Art
Pottery Association
 Riley Humler, President
 6475 Grand Vista Ave.
 Cincinnati, OH 45213
 (513) 432-5769
 rileyhumler@gmail.com
 www.aapa.info

Arts & Crafts Research Fund
Silent Auction Sponsor
 Bruce Johnson, Director
 25 Upper Brush Creek Rd.
 Fletcher, NC 28732
 (828) 628-1915
 Bruce1915@gmail.com
 Arts-CraftsConference.com

Groewood Village
 Barbara Blomberg,
 Lynn Patton & Pat Grimes
 111 Groewood Road
 Asheville, NC 28804
 (828) 253-7651
 ashley@groewood.com
 groewood.com

Gustav Stickley House
Foundation
Amy Shook- Perez
 828 Quail Pointe Rd.
 Virginia Beach, VA 23454
 (415) 722-9437
 stickleyhousefoundation@gmail.
 com
 gustavstickleyhousefounda-
 tion.org

Old-House Journal
Arts & Crafts Homes
Active Interest Media
 2143 Grand Ave.
 Des Moines, IA 50312
 (978) 879-4045
 bbernie@aimmedia.com
 artsandcraftshomes.com

The Gamble House Bookstore
 4 Westmoreland Place
 Pasadena, CA 91103
 (626) 449-4178
 GambleHouse.org

Museum of the American
Arts & Crafts Movement
Rudy Ciccarello
 355 4th Street North
 St. Petersburg, FL 33701
 (727)-440-4859
 info@museumaamc.org
 museumaamc.org

Rago Arts-Auction Center
 Eliane M. Talec
 333 N. Main Street
 Lambertville, NJ 08530
 (609) 397-9374
 eliane@ragoarts.com
 ragoarts.com

Rose Valley Museum at
Thunderbird Lodge
Ryan Berley
 41 Rose Valley Road
 Rose Valley, PA 19063
 info@rosevalleymuseum.org
 rosevalleymuseum.org

Roycrofters At Large
Association
 Thomas Pafk
 1054 Olean Road
 East Aurora, NY 14052
 (716) 655-3229
 thomas@thomaspafkdesign.com
 ralaweb.com

Southland Log Homes
Hearthstone Homes
 7521 Broad River Road
 Irmo, SC 29063
 (803) 781-5100southland-
 loghomes.com

The Stickley Museum at
Craftsman Farms
Vonda Givens,
Executive Director
 2352 Rt. 10 West
 Morris Plains, NJ 07950
 (973) 540-0311
 info@stickleymuseum.org
 stickleymuseum.org

"Biltmore Industries"

(Continued from p. 16.)

create jewelry, pottery, sculpture and more – helping to continue the handmade craftsmanship legacy.

Today, Grovewood Village includes the Grovewood Gallery, a nationally recognized gallery comprised of 9,000 square feet of artisan-made jewelry, textiles, pottery, glass and much more, contributed by over 400 artists and craftspeople from across the United States. Grovewood Village also encompasses the Biltmore Industries Homespun Museum (which gives an historical overview of Biltmore Industries), an antique car museum with Roycroft chandeliers, a restaurant, the working artist studios, and a sculpture garden.

Please note: the historic Dye House is not handicap accessible or heated. Warm attire on cold days and comfortable walking shoes are strongly recommended.

The Grovewood Gallery and Biltmore Industries Homespun Museum will be open this week Thursday through Saturday from 10:00am – 5:00pm; and on Sunday from 11:00am - 5:00pm.

Directions: Take the Vanderbilt Wing glass elevator down to the lowest level, then exit through the doors and across the terrace. Take the steps down to the road and across to the flagstone sidewalk. Allow ten minutes time for the walk from the Great Hall.



FROM BRUCE E. JOHNSON
Conference Special:
One signed book for \$15.00 OR
pick any two signed books for \$20.00!
 Next to the Silent Auction tables on the 8th floor



Stories of celebrities, presidents and famous figures - from Henry Ford to F. Scott Fitzgerald to Barack Obama - who have walked the halls of the Grove Park Inn are documented in this most popular book written about the historic hotel.



A biographical walking and driving guide covering the time Thomas Wolfe, F. Scott Fitzgerald, and Zelda Sayre Fitzgerald spent in Asheville, Hendersonville, Tryon, and Lake Lure during the 1930s and 1940s.



Sure to delight anyone who enjoys historical novels, *An Unexpected Guest* is a murder mystery swirling around famous guests and the Inn's resident ghost, the Pink Lady.

Find other works by Bruce E. Johnson at
www.brucejohnsonbooks.com

Tom, Scott & Zelda Following In Their Footsteps



Thomas Wolfe.
F. Scott Fitzgerald.
Zelda Sayre Fitzgerald.

Three tragic, iconic figures of the 1930s who roamed the streets of Asheville, Hendersonville, Tryon, and Lake Lure seeking inspiration and characters for their novels and short stories.

Historian Bruce E. Johnson has literally retraced their footsteps, from the divided Wolfe family home and dusty tombstone shop to F. Scott Fitzgerald's scandalous time at the Grove Park Inn and Zelda's heart-breaking confinement at nearby Highland Hospital.

Used as a walking and driving guide -- or simply as a book to be enjoyed at home -- it will enhance your appreciation for these three legendary authors and the charming North Carolina towns where they lived and worked.

Autographed copies of this and other Bruce Johnson books are available at the Knock On Wood Publications booth next to the Silent Auction on the 8th Floor of Vanderbilt wing.

Books, Magazines & More Show

8th Floor Vanderbilt Wing

Dard Hunter Studios
Dard Hunter III
Karissa Hunter

Educational Display Case
(in alcove)

Old House Journal
Active Interest Media
Becky Bernie

*Entrance to
Antiques Show*

*The Stickley Museum
at Craftsman Farms*

The Arts & Crafts Press:
Yoshiko Yamamoto

*The Roycroft Inn/
The Roycroft Campus*

**The Museum of the American
Arts and Crafts Movement**

*American Art
Pottery Association*

David Rago Auctions
Eliane Talec

Riley Humler
Linda Carrigan

**Author Book
Signing Table**

**Arts & Crafts Research Fund
Book Sales**

Bruce Johnson
SILENT AUCTION
(in alcove)

The Gamble House Bookstore

10th Floor Exhibitors

*Stairs and Elevator
to 8th Floor*

Lunch Seating Area

**Roycrofters at
Large Association**

**Southland
Log Homes**

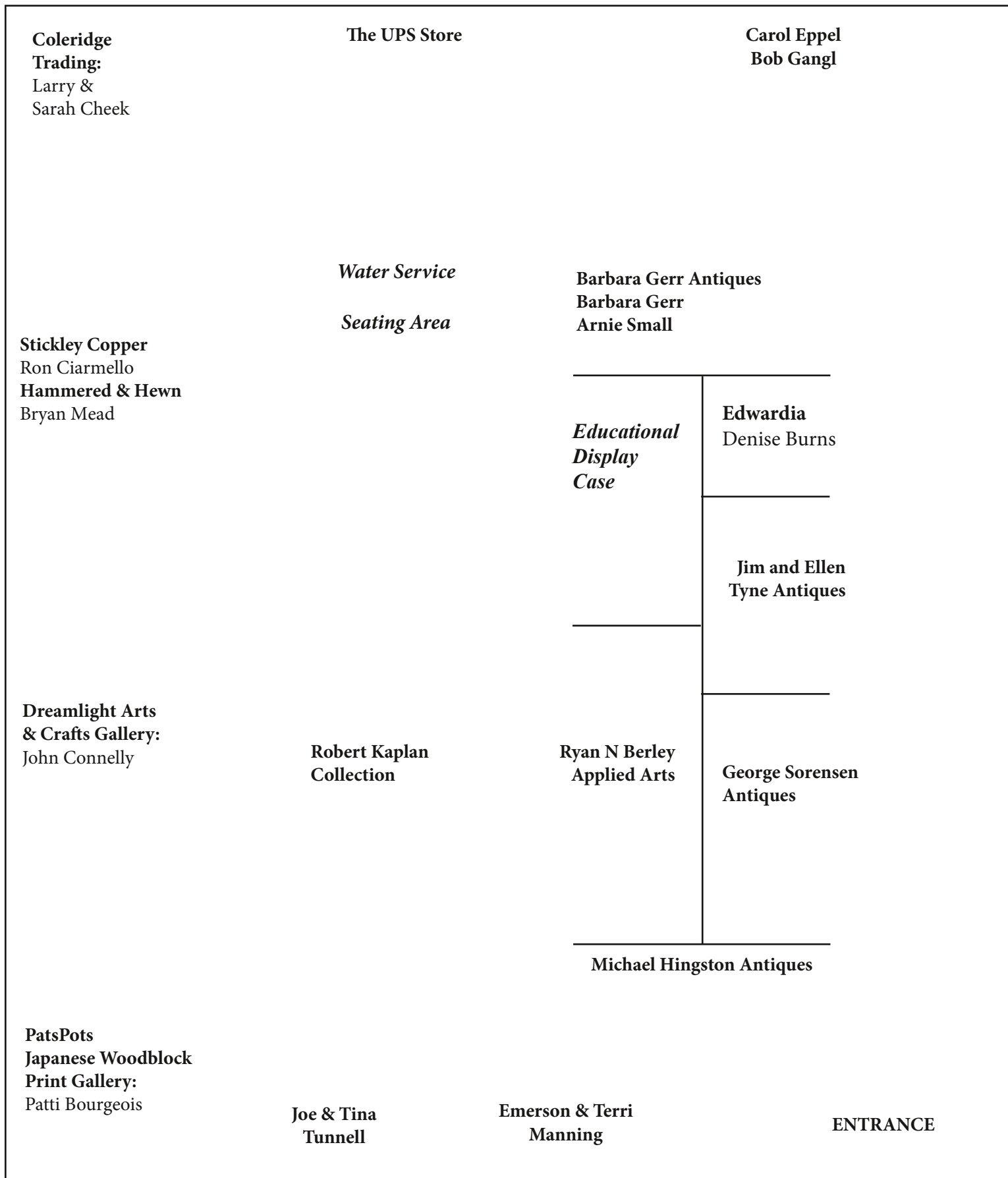
*Door to
Great Hall*

**Groveswood
Gallery**

**Rose Valley Museum
at Thunderbird Lodge**

**Gustav Stickley
House Foundation**

Arts & Crafts Antiques Show



Grand Ballroom Vanderbilt Wing

**Mark Harris
Antiques**

**Red Shoe Movers
and More:
Joseph Potter**

Jack Papadinis

Karen Redinger

**Nancy &
Raymond
Hunt**

JustArtPottery.com
Greg and Lana
Myroth

**AC Stickley
California Historical Design:**
Gus Bostrom
Hoa Nguyen-Bostrom

**Seaside
Mission:**
Larry
Delehanty

**Christine
Boone**

Greg McCreary

**Oberkirsch
Designs:**
Jean & Mark
Oberkirsch

**Kindred Styles
Antiques:**
Gene & Jody
Zwiefel

**Uncommon
Artifacts
Estate
Services LLC**

**Diverse Ayres
Fine Art**

Tommy
McPherson

Marc Williams

**Drucker
Antiques**

Bill Drucker

**Clements
Antiques:**
Todd
Clements

**Eastwood
Gallery:**

Brian Smith

Cameron Quintal

Treadway Gallery:
Don and Drew Treadway

JMW Gallery:
Jim Messineo
Mike Witt

Antique Articles:
Sandie Fowler

The Clinker Press & Friends
Andre' & Ann Chaves
Dianne Ayres & Tim Hansen
Robert Rust

Contemporary Craftsirms Show

Find Dard Hunter Studios
and The Arts & Crafts Press
outside the grand ballroom!

8th Floor
Vanderbilt
Wing

Friday
1:00 - 6:00pm

Saturday
Noon - 6:00pm

Sunday
11:00 - 4:00pm

Line for show
entry begins on
10th Floor!

Door Pottery:
Scott Draves

Information tables

The Bungalow Craft
Julie Leidel

Coolidge Room:

Archive Edition Textiles:
Paul Freeman

Ron VanOstrand Metal Studio

LGG Creative Art
Leslie Guilbault

FMG Design

Gallenberg
Studio

Calmwater
Designs:
Stephanie Young

Jewelry by
Rachelle Davis

Paint by Threads:
Natalie Richards

Clark House
Pottery:
Bill & Pam Clark

Odd, Inq.

Brian Brace
Fine Furniture

Bill Shearrow

Eric Olson
Pottery

Ragsdale Fine Home
Furnishings
Phil Myer

Motawi Tileworks
Nawal Motawi

Stained Glass Designs
Bill Kuczmanski

Tom Bojanowski
Art & Design

Fran Moore
Woodworking

Persian Carpet:
Doug & Nelda Lay

Karen Hovde
Interior Vision

Joslyn Fine
Metalwork

Hog Hill Pottery:
John & Scottie Post

Amy Brandenburg Studio

Mission Guild Studio:
Christine Schorf-Miller
James Miller

Eisenhower Room:

Anderson Art Metal:
Jebb & Michelle Anderson

Shawn Krueger Fine Art

Schenschnitte Originals:
Sue Mair, Paper artist

Hoover Room:

"New Voices in Handcrafted
North Carolina"

Kelsey Schissel Ceramics

Noel Yovovich

Ilene Kay Jewelry

and more artists from NC!

Roosevelt Room:

Small Group
Discussions

Taft Room:
Daily Demonstrations
The Process of Ebonizing
with David Van Epps (pg. 24)

*Nawal Motawi's Design
Thought Process*
with Nawal Motawi (pg. 24)

**FREE
DRAWING**

Seating Area
Water Service

Behind the Scenes:

Kate Nixon, Conference & Show Director
 Bruce Johnson, Founder and Conference Advisor
 P.O. Box 5072
 Asheville, NC 28813
 (828) 628-1915
 info@arts-craftsconference.com
 www.arts-craftsconference.com

Omni Grove Park Inn
 290 Macon Avenue Asheville, NC 28801
 (828) 252-2711 www.grovecparkinn.com

Omni Grove Park Inn Room Reservations
 Michelle Emile

Omni Grove Park Inn Managing Director
 Gary Froeba

Omni Grove Park Inn Convention Services
 Maud Eeuwen

Catalog Production:
 Kate Nixon, Editor
 (828) 628-1915
 info@arts-craftsconference.com

Blue Ridge Printing (828) 254-1000
 544 Haywood Road Asheville, NC 28806
 prepress@brprinting.com www.brprinting.com

Quick Finder:

Agenda, Friday - 10.	Seminars, Friday - 26.
Agenda, Saturday - 34.	Seminars, Sat. - 36.
Agenda, Sunday - 46.	Seminars, Sun. - 48.
Art Museum - 58.	Silent Auction - 12.
Book Club - 22.	Small Groups - 32.
Booksellers - 79.	Biltmore Industries 16.
Demonstrations - 24.	Tours, GPI - 18.
Dining - 74.	Tours, House - 30.
	Workshops - 73.

Supporters:

My deep thanks to all my catalog advertisers for the 2024 Catalog. Your support in these tough times for print publications means the world and helps to make the 37th anniversary publication possible.

- Kate Nixon

Am. Art Pottery Assoc.	43.	McLeod, Kelly	21.
Archive Edition	4.	Melton Workroom	31.
Arts and Crafts		Mission Guild	13.
In August	66.	Motawi Tile	33.
A&C Period Textiles	19.		
Arts & Crafts Press	19.	Nostalgic Warehouse	64.
		Old California Lighting	23.
Bradbury & Bradbury	12.	Old House Journal	3.
Brace, Brian	11.		
Brunk Auctions	55.	Paint by Threads	29.
Bungalow Craft	18.	PatsPots	47.
		The Persian Carpet	25.
CA Historical Design	15.		
Carreaux Du Nord	46.	Rago Auctions /	
Clark House Pottery	7.	Toomey & Co	37 & 53.
Crown Point Cabinetry	2.	Redux	44 & 49.
		Red Shoes Movers	73.
Dalton's	9.	Robert Kaplan Collection	5.
Dirk Van Erp Museum	14.	Roycrofters At Large	61.
eCobre	29.	Roycroft Campus Corp.	45.
Everson Museum of Art	7.	Roycroft Inn	45.
FMG Design	19.	Rust, Keith	35.
		Rust, Robert	22.
Gamble House	18.		
Gerr, Barbara	27.	Southland Log Homes	30.
Groveswood Village	17.	Stickley Company	1.
		Stickley Copper	28.
Hammered & Hewn	28.		
Hebert, Susan	29.	Thomas, Steven	20.
		Tiger Rug	IFC
Japanese Woodblock			
Prints Gallery	47.	United Crafts	22.
		UPS Store	73.
Katrich, Paul	13.		
Kindred Styles	29.	VanOstrand, Ronald	19.
Knock on Wood			
Publications	58.	Wilder, Laura	7.
KSM Architecture	21.	Yamamoto, Yoshiko	19.
Leidel, Julie	18.	Zwiefel, Gene and Jody	29.



Make Your Room Reservations today!

The 38th National Arts and Crafts Conference & Shows
February 21 - 23, 2025

800-438-5800 arts-craftsconference.com

Exploring Charlotte Street

If you've got a car and time on your hands, here are some helpful options nearby on Charlotte Street.



Places to visit

The Preservation Society of Asheville and Buncombe County
324 Charlotte St
psabc.org

E.W. Grove Park
(Great for a picnic on a sunny day!)
338 Charlotte St.

St. Mary's Episcopal Church
337 Charlotte St.
stmarysasheville.com
(828) 254-5836

Health and Healing Services:

Club Pilates
80 Charlotte St. Suite 20
(828) 782-3629
clubpilates.com

The Lightworkers Sanctuary
Holistic Therapy and Meditation services
201 Charlotte St.
(828) 469-0896
thelightworkerssanctuary.com

Three Triangles Acupuncture
Acupuncture services
247 Charlotte St. Room 8
(828) 337-2659

Places to get coffee, dinner, etc

Breakfast:
OWL Bakery of North Asheville
Takeout only
8am - 2pm bakery, closed Monday
197 Charlotte St.
Owlbakery.com

City Bakery

88 Charlotte St.
(828) 254-4289
citybakery.net

Mountain City Coffee Roasters

191 Charlotte St. #101
mountaincity.com
(828) 407-9258

Starbucks

62 Charlotte St.
(828) 225-3753

Restaurants Serving Lunch/Dinner

Charlotte St. Grill and Pub

157 Charlotte St.
(828) 252-2948
charlottestreetpub.com

Jettie Rae's Oyster House

Dine in and takeout, dinner only
143 Charlotte St.
(828) 505-4499
jettieraes.com

Taco Temple

Classic Mexican fare
Dine in and drive through
132 Charlotte St.
(828) 255-8098
mamacitastacotemple.com

Bone and Broth

Dinner only
94 Charlotte St.
(828) 505-2849
boneandbrothasheville.com

Happy Exploring!

Around Asheville:

A Destination for Hops, Houses and History



boarding house called Dixieland in his novels. Guided walking tours take you back to the 1920s and a fully-restored, downtown home filled with an eclectic collection of furnishings, including some Arts and Crafts.

Art Deco, Anyone? – Just before the stock market crash, Art Deco architect Douglas Ellington designed our downtown City Hall, the First Baptist Church, the S&W Building, a fire station, and the Asheville High School -- all in the Art Deco style, best seen with the aid of a car and a detailed map.

Biltmore Estate - Completed in 1895, this 250-room mansion and 125,000-acre estate was opened to the public in 1930 to help the cash-strapped Vanderbilt family and to boost tourism for Asheville. Now more than one million people a year tour the house, gardens,

cafes, shops and winery, all still owned by the family. Museum-quality art and antiques in a French chateau on a bluff overlooking the French Broad River.

Biltmore Village - Constructed by George Vanderbilt around 1900 for his estate workers, this historic Arts and Crafts village (pictured here) is now a popular shopping, walking and dining area.

Biltmore Industries - Built in 1917 on the original G.P.I. grounds, this Arts and Crafts enterprise was founded by the Vanderbilts in Biltmore Village in 1905, but moved here in 1917. The original buildings have been restored and are not to be missed! See page 16 for information and tour times.

Neighborhoods - Asheville continues to be a small city of unique neighborhoods, all with prevalent Arts and Crafts influence. You'll need a street map, but watch for Montford, the Chestnut-Liberty Streets area, Kimberly Avenue-Norwood Park, the Manor Grounds, Kennilworth, Beaver Lake, and West Asheville. If the weather is nice, you can park, walk and take photographs (the neighbors are used to it.)

Preservation Society Bus Tour - In case you don't have time on your own. See details on page 30.

- Kate.

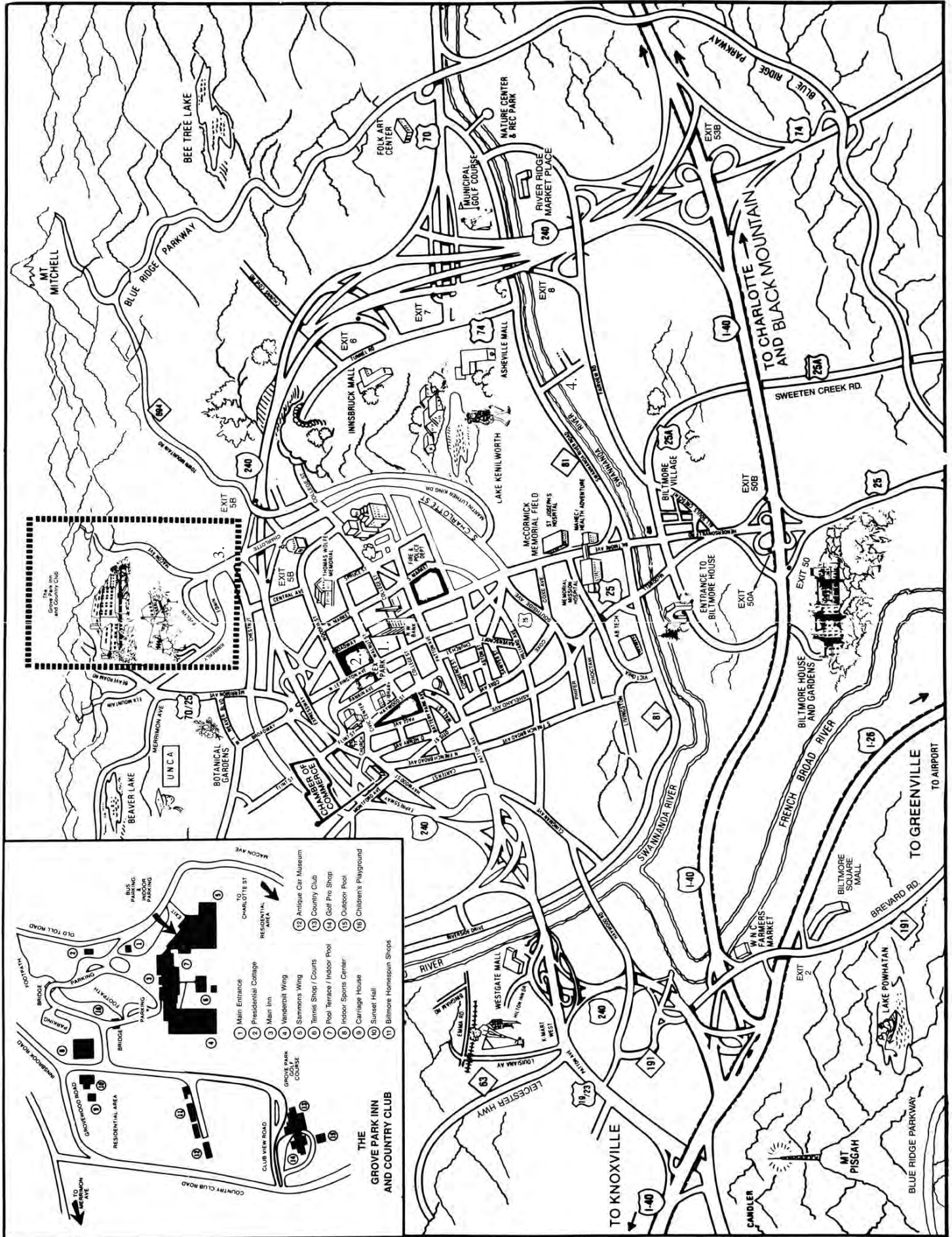
The agenda for the 37th National Arts and Crafts Conference and Shows is so full of events that it is difficult to find even a few minutes to go exploring Asheville on your own. If, however, you do have the opportunity, here are a few highlights to consider:

The Blue Ridge Parkway - Constructed as part of President Roosevelt's W.P.A. program, this winding, scenic highway runs through the Blue Ridge Mountains, angling past Asheville to the northeast and southwest (see map). You can enter at more than four points around Asheville and can travel in either direction before turning around and returning. Great vistas, tunnels, valleys and mountains for a leisurely drive. If you head north, be sure to stop in the Folk Art Center.

Downtown - Classic century-old brick buildings have been restored into galleries, antiques shops, restaurants, cafes, shops, retail stores, and condominiums. If you're thirsty for a cold pint of beer, check out Archetype Brewing on Broadway, The Chemist Brewing, or nearby Asheville Pizza and Brewing on Merrimon Avenue for the fan of beer and movies.

Thomas Wolfe House - You don't have to have read *Look Homeward, Angel* to appreciate the visitor's center next to Wolfe's childhood home that was the sprawling

Map of Asheville



NOTES, IDEAS, QUESTIONS...

Additional note space

This image shows a blank sheet of white paper with horizontal ruling lines. The lines are evenly spaced and run across the width of the page. There are no margins, text, or other markings on the paper.

NEW CONTACTS

NAME

EMAIL

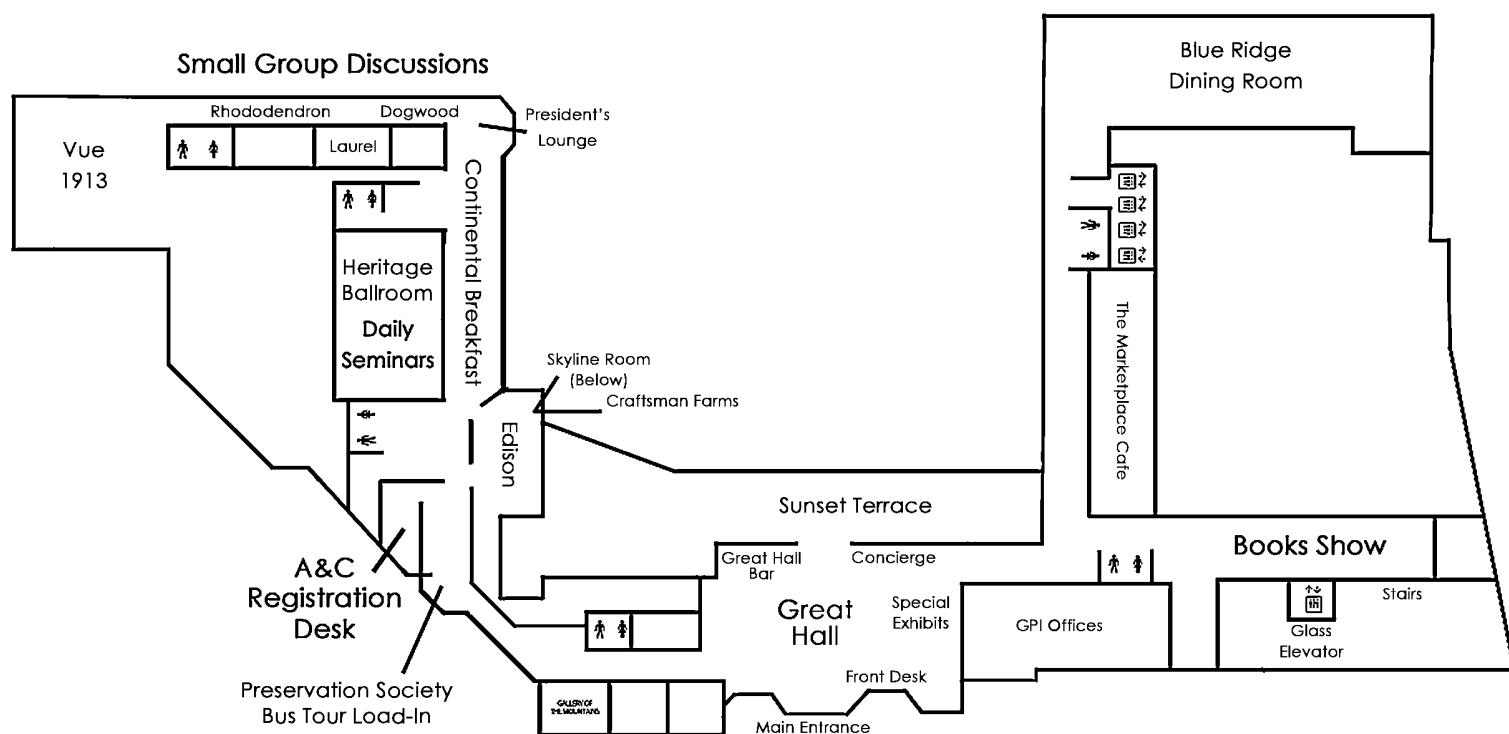
PHONE NUMBER OR ADDRESS

[illegible]

Omni Grove Park Inn

Sammons Wing

Vanderbilt Wing



LOBBY LEVEL (10) FLOOR PLAN

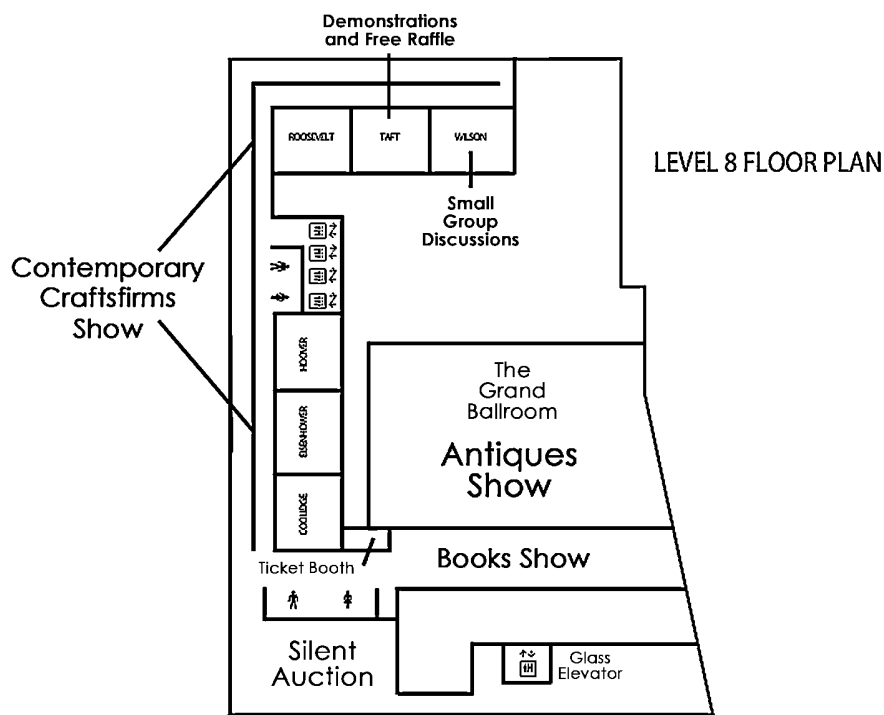
To Grovewood Gallery
And Biltmore Industry
Walking Tours:

Take the Glass Elevator Down to the Lower Level (Elaine's); Exit through the north doors and walk across the Terrace, down the stairs, and across the road to the flagstone path. *For more information, see page 16.*

The line for the shows will form each day on the Tenth Floor. People at any other entrances will be held back until those on the Tenth Floor have entered the shows.

Show Hours:

Friday	1:00pm - 6:00pm
Saturday	Noon - 6:00pm
Sunday	11:00am - 4:00pm



LEVEL 8 FLOOR PLAN

